

## DAIRY CATTLE - SECTION 4

BERRY SHOWGROUND P.I.C. NK464606

Chief Steward: Col Walsh

Berry Show encourages the move towards a disease-free status for all exhibits. For 2024 the following conditions will apply:

The Stewards will ensure:

- Tested negative animals will be housed separately from other animals.
- Every effort will be made to immediately remove faecal material to an isolated area.
- Separate fresh water facilities will be made available.
- EBL (Enzootic Bovine Leucosis) - Dairy Cattle are only accepted for exhibit if they originate from "EBL Monitored Free" herd. Certification to this effect must accompany entry form.

### General Conditions for Dairy Cattle Section

- A. All cattle must be unloaded and loaded at the loading ramp in Albany Street.
- B. It is compulsory for herd book stock to enter according to birth registration. Entries to be made on the prescribed form, available from the Secretary. The age of registered dairy cattle to be the actual age up to and inclusive of 1<sup>st</sup> January. **Entries close Wed 31<sup>st</sup> January 2024 - 7pm**
- C. No animal in the Cattle Section can compete in more than one Sub-Section. The owner of any animal so competing shall forfeit all prize moneys at Show.
- D. All animals must be under control, and all cattle must be led around the judging ring.
- E. All paraders are to wear breed dust coats or breed uniforms and enclosed shoes.
- F. No single exhibit will be entitled to more than one first prize, nor will it be allowed to compete, under penalty of disqualification, after winning a first prize, except in Champion, Special Classes, Groups or Pens.
- G. All exhibits, having won a prize, except in pens, must parade in the ring, as directed by the Stewards.
- H. Cattle shown in pens will be allowed to compete in single exhibits and vice-versa.
- I. Cow entered as dry will be allowed to compete as cow in milk (if calved).
- J. The definition of the word "heifer" is a female beast that has never had a calf, and that has no more than six permanent teeth. Exhibitors are to observe this condition when completing the entry form.
- K. Where animals are owned jointly or in syndicates, points for most successful exhibitor or breeder trophies to be awarded to the names jointly or the syndicate, not divided between the owners individually.

### JOHNE'S DISEASE:

- The Society will permit both tested and untested animals.
- The current status of exhibitors' herds must be notified upon entry or prior to judging day.

### BIOSECURITY

- As from August 2019, Biosecurity Act has been amended. Livestock farmers need to demonstrate they observe Animal Welfare Standards & Guidelines details at [www.mla.com.au/biosecurity](http://www.mla.com.au/biosecurity). Cattle will not be able to access communal water troughs. Bedding on the ground will be disinfected after use.

**All electrical leads and appliances are to be tagged and kept off the ground.**

**Cattle must be loaded by 3pm and shed left clean.**

**Cattle must use their own water container.**

## HOLSTEIN FRIDAY PROGRAM STARTS AT 9AM

Stewards: Paul Condon, John Miller, Paul Andersen and Phil Duncan

**ENTRIES CLOSE ON WEDNESDAY, 31<sup>st</sup> January 2024. ENTRY FEES sponsored by RAINE AND HORNE BERRY TO BE CONDUCTED BY OFFICIAL H.F.A.A. RULES**

All exhibits must be officially registered with the Holstein Cattle Society of Australia and all cattle entered for competition will be inspected, if necessary, prior to judging by Inspectors of the Holstein Cattle Society of Australia and all registrations will be checked.

Ribbons will be awarded for 1<sup>st</sup>, 2<sup>nd</sup> and 3<sup>rd</sup>.

Class 4019 Heifer, under 6 months 1<sup>st</sup> \$20 2<sup>nd</sup> \$10 3<sup>rd</sup> \$5 + Ribbons **sponsored by BISHOP'S SOUTH NOWRA**

Class 4020 Heifer, under 12 months 1<sup>st</sup> \$20 2<sup>nd</sup> \$10 3<sup>rd</sup> \$5 + Ribbons **sponsored by RAINE & HORNE BERRY**

Class 4021 Heifer, 12 months and under 18 months 1<sup>st</sup> \$20 2<sup>nd</sup> \$10 3<sup>rd</sup> \$5 + Ribbons **sponsored by RAINE & HORNE BERRY**

Class 4022 Heifer, 18 months and under 2 years 1<sup>st</sup> \$20 2<sup>nd</sup> \$10 3<sup>rd</sup> \$5 + Ribbon **sponsored by RAINE & HORNE BERRY**

Class 4023 Pair of females, under 2 years 1<sup>st</sup> \$20 2<sup>nd</sup> \$10 3<sup>rd</sup> \$5 + Ribbon sponsored by **RAINE & HORNE BERRY**

**JUNIOR CHAMPION FEMALE HOLSTEIN, under 2 years - \$100 + Ribbon**

**RESERVE JUNIOR CHAMPION FEMALE HOLSTEIN, under 2 years - \$25 + Ribbon**

Class 4024 Female, 2 to 3 years dry 1<sup>st</sup> \$50 2<sup>nd</sup> \$10 3<sup>rd</sup> \$5 + Ribbons **sponsored by RAINE & HORNE BERRY**

Class 4025 Cow, under 2 1/2 years in milk 1<sup>st</sup> \$50 2<sup>nd</sup> \$10 3<sup>rd</sup> \$5 + Ribbons **sponsored by RAINE & HORNE BERRY**

Class 4026 Cow, 2 1/2 to 3 years, in milk 1<sup>st</sup> \$50 2<sup>nd</sup> \$10 3<sup>rd</sup> \$5 + Ribbons **sponsored by RAINE & HORNE BERRY**

**INTERMEDIATE CHAMPION FEMALE HOLSTEIN - \$75 + Ribbon sponsored by McGOLDRICK ESTATE AGENTS BERRY**

**RESERVE INTERMEDIATE CHAMPION FEMALE HOLSTEIN - \$20 + Ribbon**

# Raine & Horne®

## Berry



Harmonious blend of talent, passion, and experience

*For all your Selling & Leasing needs,  
spanning industrial, commercial, lifestyle or  
residential, we've got you covered!*



☎ 02 4464 1300

🌐 [www.rh.com/berry](http://www.rh.com/berry)

📍 2/65 Queen St, Berry



- Class 4027 Cow, over 3 years dry 1<sup>st</sup> \$20 2<sup>nd</sup> \$10 3<sup>rd</sup> \$5 + Ribbons
- Class 4028 Cow, 3 to 4 years in milk 1<sup>st</sup> \$50 2<sup>nd</sup> \$10 3<sup>rd</sup> \$5 + Ribbons **sponsored by MARGARET and COLIN SHARPE**
- Class 4029 Cow, 4 to 5 years in milk 1<sup>st</sup> \$50 2<sup>nd</sup> \$10 3<sup>rd</sup> \$5 + Ribbons **sponsored by SELECT GENETICS**
- Class 4030 Cow, 5 to 7 years in milk 1<sup>st</sup> \$50 2<sup>nd</sup> \$10 3<sup>rd</sup> \$5 + Ribbons **sponsored by MANILDRA GROUP**
- Class 4031 Cow, 7 years and over in milk 1<sup>st</sup> \$50 2<sup>nd</sup> \$10 3<sup>rd</sup> \$5 + Ribbons **sponsored by RAY WHITE BERRY**
- Class 4032 Pen of three females, over 2 years 1<sup>st</sup> \$50 2<sup>nd</sup> \$10 3<sup>rd</sup> \$5 + Ribbons **sponsored by RAINE & HORNE BERRY**
- Class 4033 Dam and daughter or two daughters progeny of 1 dam 1<sup>st</sup> \$20 2<sup>nd</sup> \$10 3<sup>rd</sup> \$5 + Ribbons
- Class 4034 Best uddered cow \$100 **sponsored by MARGARET and COLIN SHARP**

**CHAMPION FEMALE HOLSTEIN, OVER 3 YEARS - \$200 + V.J. LAMOND MEMORIAL. RIBBON sponsored by ORFORD RURAL CONTRACTING**

**RESERVE CHAMPION FEMALE HOLSTEIN, over 3 years - \$50 + Ribbon**

- Class 4035 Production Prize, Cow 4 years and over  
To be eligible a cow must have won a ribbon in her respective breed class. The winner is then determined as the cow producing the most butterfat plus protein under official or group recording completed during the period 1<sup>st</sup> January to 31<sup>st</sup> December, 2023. Proof of production to be supplied to the Steward.  
1<sup>st</sup> \$20 2<sup>nd</sup> \$10 3<sup>rd</sup> \$5+ Ribbons
- Class 4036 Production Prize, Cow under 4 years Same conditions as in previous class 1<sup>st</sup> \$20 2<sup>nd</sup> \$10 3<sup>rd</sup> \$5 + Ribbons **sponsored by BISHOPS, SOUTH NOWRA**

## JERSEY FRIDAY PROGRAM STARTS AT 9AM

**Stewards:** Kim Bailey & Allan Timbs  
**ENTRIES CLOSE WEDNESDAY, 31<sup>st</sup> January 2024.**  
**ENTRY FEES sponsored by RAINE AND HORNE BERRY.**

All exhibits must be officially registered with the Jersey Cattle Society of Australia and all cattle entered for competition will be inspected, if necessary, prior to judging by Inspectors of the Jersey Cattle Society of Australia and all tattoos, etc., will be checked.

Ribbons for 1<sup>st</sup> 2<sup>nd</sup> 3<sup>rd</sup>

- Class 4037 Heifer, under 6 months 1<sup>st</sup> \$20 2<sup>nd</sup> \$10 3<sup>rd</sup> \$5 + Ribbons **sponsored by BISHOP'S SOUTH NOWRA**
- Class 4038 Heifer, under 12 months 1<sup>st</sup> \$20 2<sup>nd</sup> \$10 3<sup>rd</sup> \$5 + Ribbons **sponsored by RAINE & HORNE BERRY**
- Class 4039 Heifer, 12 months and under 18 months 1<sup>st</sup> \$20 2<sup>nd</sup> \$10 3<sup>rd</sup> \$5 + Ribbons **sponsored by RAINE & HORNE BERRY**
- Class 4040 Heifer, 18 months and under 2 years 1<sup>st</sup> \$20 2<sup>nd</sup> \$10 3<sup>rd</sup> \$5 + Ribbons **sponsored by RAINE & HORNE BERRY**
- Class 4041 Pair of females, under 2 years 1<sup>st</sup> \$20 2<sup>nd</sup> \$10 3<sup>rd</sup> \$5 + Ribbons **sponsored by RAINE & HORNE BERRY**  
**JUNIOR CHAMPION FEMALE JERSEY, under 2 years - \$100 + Ribbon sponsored by BERRY SMASH REPAIRS**  
**RESERVE JUNIOR CHAMPION FEMALE JERSEY, under 2 years - \$25 + Ribbon sponsored by RAINE AND HORNE BERRY**

- Class 4042 Female, 2 to 3 years dry 1<sup>st</sup> \$20 2<sup>nd</sup> \$10 3<sup>rd</sup> \$5 + Ribbons
- Class 4043 Cow, under 2 ½ years in milk 1<sup>st</sup> \$25.00 2<sup>nd</sup> \$10 3<sup>rd</sup> \$5+ Ribbons
- Class 4044 Cow, 2 ½ to 3 years, in milk 1<sup>st</sup> \$25.00 2<sup>nd</sup> \$10 3<sup>rd</sup> \$5 + Ribbons  
**INTERMEDIATE CHAMPION FEMALE JERSEY - \$75 + Ribbon sponsored by McGOLDRICK ESTATE AGENTS BERRY**  
**RESERVE INTERMEDIATE CHAMPION FEMALE JERSEY - \$20 + Ribbon**

- Class 4045 Cow, over 3 years dry 1<sup>st</sup> \$20 2<sup>nd</sup> \$10 3<sup>rd</sup> \$5 + Ribbons **sponsored by MARGARET and COLIN SHARPE**
- Class 4046 Cow, 3 to 4 years in milk 1<sup>st</sup> \$50 2<sup>nd</sup> \$10 3<sup>rd</sup> \$5 + Ribbons **sponsored by RAINE & HORNE BERRY**
- Class 4047 Cow, 4 to 5 years in milk 1<sup>st</sup> \$50 2<sup>nd</sup> \$10 3<sup>rd</sup> \$5 + Ribbons **sponsored by RAINE & HORNE BERRY**
- Class 4048 Cow 5 to 7 years in milk 1<sup>st</sup> \$50 2<sup>nd</sup> \$10 3<sup>rd</sup> \$5 + Ribbons **sponsored by MANILDRA GROUP**
- Class 4049 Cow 7 years and over in milk 1<sup>st</sup> \$50 2<sup>nd</sup> \$10 3<sup>rd</sup> \$5 + Ribbons **sponsored by RAINE & HORNE BERRY**
- Class 4050 Pen of three females, over 2 years 1<sup>st</sup> \$50 2<sup>nd</sup> \$10 3<sup>rd</sup> \$5 + Ribbons
- Class 4051 Dam and Daughter or two daughters progeny of 1 dam 1<sup>st</sup> \$50 2<sup>nd</sup> \$10 3<sup>rd</sup> \$5 + Ribbons
- Class 4052 Best uddered cow 1<sup>st</sup> \$60.00 **sponsored by RAINE & HORNE BERRY**  
**CHAMPION FEMALE JERSEY, over 3 years - \$200 + Ribbon sponsored by RAY WHITE BERRY**  
**RESERVE CHAMPION FEMALE JERSEY, over 3 years - \$50 + Ribbon sponsored by RAY WHITE BERRY**

- Class 4053 Production Prize, Cow 4 years and over.  
To be eligible a cow must have won a ribbon in her respective breed class. The winner is then determined as the cow producing the most butterfat plus protein under official or group recording completed during the period 1<sup>st</sup> January to 31<sup>st</sup> December, 2023. Proof of production to be supplied to the Steward. 1<sup>st</sup> \$20 2<sup>nd</sup> \$10 3<sup>rd</sup> \$5 + Ribbons
- Class 4054 Production Prize, Cow under 4 years Same conditions as in previous class 1<sup>st</sup> \$20 2<sup>nd</sup> \$10 3<sup>rd</sup> \$5 + Ribbons **sponsored by RAINE & HORNE BERRY**

## COLOURED OR ANY OTHER BREED FRIDAY PROGRAM STARTS AT 9AM

**Steward:** Paul Timbs

**ENTRIES CLOSE ON WEDNESDAY, 31<sup>st</sup> January 2024. ENTRY FEES sponsored by RAINE AND HORNE BERRY**  
All exhibits must be officially registered with the respective Societies.

Ribbons will be awarded for 1<sup>st</sup>, 2<sup>nd</sup> and 3<sup>rd</sup>.

- Class 4055 Heifer, under 6 months 1<sup>st</sup> \$20 2<sup>nd</sup> \$10 3<sup>rd</sup> \$5 + Ribbons, **sponsored by BISHOP'S SOUTH NOWRA**
- Class 4056 Heifer, under 12 months 1<sup>st</sup> \$20 2<sup>nd</sup> \$10 3<sup>rd</sup> \$5 + Ribbons
- Class 4057 Heifer, 12 months and under 18 months 1<sup>st</sup> \$20 2<sup>nd</sup> \$10 3<sup>rd</sup> \$5 + Ribbons
- Class 4058 Heifer, 18 months and under 2 years 1<sup>st</sup> \$20 2<sup>nd</sup> \$10 3<sup>rd</sup> \$5 + Ribbons
- Class 4059 Pair of females, under 2 years 1<sup>st</sup> \$20 2<sup>nd</sup> \$10 3<sup>rd</sup> \$5 + Ribbons

**JUNIOR CHAMPION FEMALE ANY OTHER BREED, under 2 years - \$50 + Ribbon**  
**RESERVE JUNIOR CHAMPION FEMALE ANY OTHER BREED, under 2 years - \$25 + Ribbon**  
**JUNIOR CHAMPION FEMALE ILLAWARRA, under 2 years - \$50 + Ribbon, sponsored by BERRY SMASH REPAIRS**  
**RESERVE JUNIOR CHAMPION FEMALE ILLAWARRA, under 2 years - \$20 + Ribbon, sponsored by RAINE & HORNE BERRY**

- Class 4060 Female, 2 to 3 years dry 1<sup>st</sup> \$20 2<sup>nd</sup> \$10 3<sup>rd</sup> \$5 + Ribbons
- Class 4061 Cow, under 2 ½ years in milk 1<sup>st</sup> \$25.00 2<sup>nd</sup> \$10 3<sup>rd</sup> \$5 + Ribbons
- Class 4062 Cow, 2 ½ to 3 years in milk 1<sup>st</sup> \$25.00 2<sup>nd</sup> \$10 3<sup>rd</sup> \$5 + Ribbons  
**INTERMEDIATE CHAMPION FEMALE ANY OTHER BREED - \$75 + Ribbon**  
**RESERVE INTERMEDIATE CHAMPION FEMALE COLOURED OR ANY OTHER BREED - \$20 + Ribbon**  
**INTERMEDIATE CHAMPION FEMALE ILLAWARRA - \$75 + Ribbon sponsored by McGOLDRICK ESTATE AGENTS**  
**RESERVE INTERMEDIATE CHAMPION FEMALE ILLAWARRA - \$20 + Ribbon**

- Class 4063 Cow, over 3 years dry 1<sup>st</sup> \$20 2<sup>nd</sup> \$10 3<sup>rd</sup> \$5 + Ribbons
- Class 4064 Cow, 3 to 4 years in milk 1<sup>st</sup> \$50 2<sup>nd</sup> \$10 3<sup>rd</sup> \$5 + Ribbons, **sponsored by MANILDRA GROUP**
- Class 4065 Cow, 4 to 5 years in milk 1<sup>st</sup> \$50 2<sup>nd</sup> \$10 3<sup>rd</sup> \$5 + Ribbons **sponsored by MARGARET & COLIN SHARPE**
- Class 4066 Cow, 5 years and over in milk 1<sup>st</sup> \$50 2<sup>nd</sup> \$10 3<sup>rd</sup> \$5 + Ribbons, **sponsored by J.T. ALEXANDER MEMORIAL**
- Class 4067 Pen of three females, over 2 years 1<sup>st</sup> \$20 2<sup>nd</sup> \$10 3<sup>rd</sup> \$5 + Ribbons
- Class 4068 Best Uddered cow \$60 **sponsored by RAINE & HORNE BERRY**
- Class 4016 Best uddered Illawarra cow **H.G. MILLER MEMORIAL**
- Class 4018 Production Prize, cow under 4 years

To be eligible a cow must have won a ribbon in her respective breed class. The winner is then determined as the cow producing the most butterfat plus protein under official or group recording completed during the period 1<sup>st</sup> January to 31<sup>st</sup> December, 2023. Proof of production to be supplied to the Steward.

1<sup>st</sup> \$20 2<sup>nd</sup> \$10 3<sup>rd</sup> \$5 + Ribbons **sponsored by RAINE AND HORNE BERRY**

Individual breed Champions from the Coloured or Any Other Breed section will be chosen to enter the Interbreed section.

Categories will be -  
JUNIOR CHAMPION

INTERMEDIATE CHAMPION

SENIOR CHAMPION

BEST UDDER

PEN OF 3 FEMALES OVER 2 YEARS

**CHAMPION FEMALE ILLAWARRA, over 3 years - \$200 + Ribbon sponsored by BERRY SMASH REPAIRS**  
**RESERVE CHAMPION FEMALE ILLAWARRA, over 3 years - \$50 + Ribbon**  
**CHAMPION FEMALE ANY OTHER BREED, over 3 years - \$200 + Ribbon sponsored by BERRY SMASH REPAIRS**  
**RESERVE CHAMPION FEMALE ANY OTHER BREED, over 3 years - \$25 + Ribbon sponsored by RAINE & HORNE BERRY**



## DAIRY YOUTH GROUP FRIDAY PROGRAM

**ENTRIES CLOSE ON WEDNESDAY, 31<sup>st</sup> January 2024**

All Youth Group Classes **sponsored by COL & SUE WALSH**

- Class 4069 Female, under 6 months 1<sup>st</sup> \$20, 2<sup>nd</sup> \$10, 3<sup>rd</sup> \$5, 4<sup>th</sup> \$5, 5<sup>th</sup> \$5
- Class 4070 Female, over 6 months and under 12 months 1<sup>st</sup> \$20, 2<sup>nd</sup> \$10, 3<sup>rd</sup> \$5, 4<sup>th</sup> \$5, 5<sup>th</sup> \$5
- Class 4071 Female, over 12 months and under 2 years 1<sup>st</sup> \$20, 2<sup>nd</sup> \$10, 3<sup>rd</sup> \$5, 4<sup>th</sup> \$5, 5<sup>th</sup> \$5

**CHAMPION DAIRY YOUTH - \$100 sponsored by COL & SUE WALSH**

**RESERVE CHAMPION DAIRY YOUTH - \$50 sponsored by COL & SUE WALSH**

- Class 4073 Junior Parader, under 10 years (under 10 years on the day. To be judged on the ability to handle their animal and general presentation) 1<sup>st</sup> \$20, 2<sup>nd</sup> \$10, 3<sup>rd</sup> \$5, 4<sup>th</sup> \$5, 5<sup>th</sup> \$5
- Class 4074 Junior Parader, 10 years and under 13 years 1<sup>st</sup> \$20, 2<sup>nd</sup> \$10, 3<sup>rd</sup> \$5, 4<sup>th</sup> \$5, 5<sup>th</sup> \$5
- Class 4075 Junior Parader, 13 years and under 20 years 1<sup>st</sup> \$20, 2<sup>nd</sup> \$10, 3<sup>rd</sup> \$5, 4<sup>th</sup> \$5, 5<sup>th</sup> \$5

**CHAMPION JUNIOR PARADER - \$50**

## INTERBREED FRIDAY PROGRAM

**SUPREME JUNIOR CHAMPION - \$100 (ALL BREEDS) sponsored by JIM HINDMARSH & SON**

**CHAMPION PRODUCTION COW - \$100 (ALL BREEDS) sponsored by BERRY RURAL STORE Prize Open Order Voucher to value of \$100 plus CHAMPION RIBBON (MUST HAVE WON A RIBBON IN HER RESPECTIVE CLASSES)**

**SUPREME INTERMEDIATE CHAMPION - \$100 (ALL BREEDS) sponsored by McGOLDRICK ESTATE AGENTS**

**BEST UDDERED COW - \$100 (ALL BREEDS) Prize plus THE HEDLEY JOHNSON MEMORIAL SASH sponsored by COLIN & MARGARET SHARPE**

**BEST PEN OF THREE OVER TWO YEARS (ALL BREEDS) - \$200**

**(First prize breed winners eligible) DR. GEORGE BORYS, D.V.M. HANOVER MEMORIAL SASH + \$200 sponsored by THE BORYS FAMILY**

**SUPREME CHAMPION COW, ALL BREEDS - \$1,400**

**F. A. MCINTOSH MEMORIAL TROPHY by THE MCINTOSH FAMILY, sponsored by McGOLDRICK ESTATE AGENTS**



# Trusted Local Agency for over 30 Years

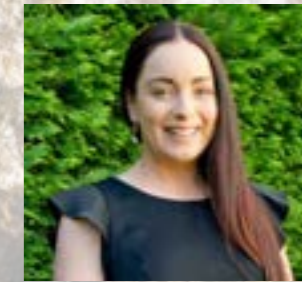
At Ray White Berry, we understand that your home is one of your most important assets, so our local property experts are here to help.  
Proudly supporting The Berry Show and our Local Community since 1992



Shane Hilaire  
Selling Principal 0401 691 790



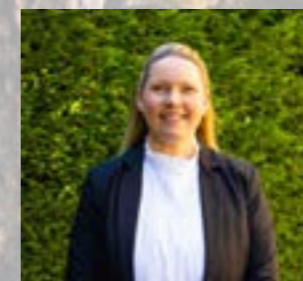
Hayley Banks  
Sales Consultant 0400 260 831



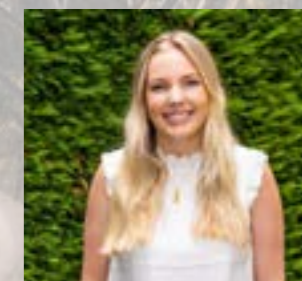
Sarah Tebbutt  
Sales Consultant 0401 691 793



Cassandra Foreman  
Operations Manager 0411 690 399



Rebecca Pugh  
Property Management 0402 357 757



Grace Thomson  
Sales Administrator 0490 532 499

02 4464 2399

