

# The 138<sup>th</sup> *Berry Show*

PROGRAM  
& SCHEDULE 2026



## LIVESTOCK

MAJOR SPONSOR

McGoldrick

ESTATE AGENTS

**FRIDAY 30 & SATURDAY 31 JANUARY 2026**  
**"The Greatest Show in Town"**



# Berry Show

## WHAT'S ON

### Friday & Saturday Program

Events, demos and competitions across both days of the Show...



FRIDAY DAYTIME  
30<sup>TH</sup> JANUARY 2026

### SHOWJUMPING

FROM 7.30AM

### AND HORSE CLASSES

FROM 9AM (RING 2,3 AND 4) 10AM (RING 1)

HORSE SCHEDULE SEE PAGES 30-42  
SHOWJUMPING SCHEDULE SEE PAGE 44



### DAIRY CATTLE JUDGING

FROM 8.30am

ON THE CATTLE LAWN  
(SEE MAP PAGE 90)

DAIRY CATTLE SCHEDULE SEE PAGES 48-52



### FROM 9am-7pm PAVILION

SEE ARTS AND CRAFTS, VEGETABLES, JAMS AND PRESERVES, FLOWERS, PAINTING, PHOTOGRAPHY AND MORE  
PAVILION SCHEDULE SEE PAGES 66-86



### FROM 10am POULTRY

RARE BREEDS AND KIDS ACTIVITIES IN THE BERRY GETAWAYS POULTRY PAVILION

POULTRY SCHEDULE  
SEE PAGES 62-64



IN THE WOODCHOP ARENA  
REGISTER FROM 3.30pm

ANTHONY BENNETT MEMORIAL

### CHILDREN'S PET SHOW

PET SHOW SCHEDULE  
SEE PAGE 87



### AND FROM 5pm WOODCHOPPING

UPDATED SCHEDULE FOR 2026!

WOODCHOP SCHEDULE  
SEE PAGES 46-47

## MC GOLDRICK MAIN ARENA FRIDAY AFTERNOON AND EVENING ENTERTAINMENT

FRIDAY ENTERTAINMENT STARTS FROM AROUND 5.30PM  
SEE BELOW FOR THE GUIDE ORDER...

### HORSE SPORTING EVENTS

HORSE EVENTS START AT 7.30AM AND FINISH AT 5.30PM

### GUY MCLEAN

FIRST TIME TO SEE THIS SHOW TONIGHT!  
HORSEMANSHIP DISPLAY - BACK FOR 2026

### MAD-STYLE-MOTO

INSANE MOTOBIKE TRICKS - BACK FOR 2026



### BERRY BUCK OFF

JOIN IN THE FUN - TURN TO PAGE 88 FOR ENTRY INFO

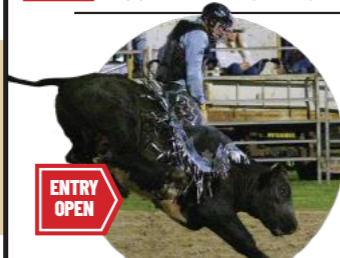
### GUY MCLEAN

SECOND CHANCE TO SEE THE SHOW TONIGHT!  
HORSEMANSHIP DISPLAY - BACK FOR 2026



### BERRY BUCK OFF - FINALS

JOIN IN THE FUN - TURN TO PAGE 88 FOR DETAILS



### RODEO

2 HRS OF ACTION - A DISPLAY OF BALANCE, BRAVERY AND SPLIT-SECOND TIMING, FOR ENTRY INFO - TURN TO PAGE 60



## DEMOS AND ATTRACTIONS FROM 10am Both Days

### GUY MCLEAN WORKSHOPS

ANIMAL NURSERY AND REPTILE ENCOUNTERS  
TRADE EXHIBITS AND FOOD TRUCKS  
DEMONSTRATIONS - COW MILKING,

HAWKESBURY WORKING SHEEP DOGS,  
BLACKSMITH DEMONSTRATIONS  
SHOALHAVEN BEE KEEPERS ASSOCIATION

FOOD AND REFRESHMENTS  
SHOW BAGS AND  
SIDESHOW ALLEY

SEE SIGNAGE AT SHOWGROUND  
FOR TIMES OF DEMOS

FIRST AID  
STATION  
RINGSIDE  
OPPOSITE  
THE PAVILION



## MC GOLDRICK MAIN ARENA SATURDAY AFTERNOON AND EVENING ENTERTAINMENT

SATURDAY ENTERTAINMENT STARTS FROM AROUND 3.30PM  
SEE BELOW FOR THE GUIDE ORDER...

### GUY MCLEAN

FIRST CHANCE TO SEE THE SHOW TONIGHT!  
HORSEMANSHIP DISPLAY - BACK FOR 2026



### YOUNG FARMER CHALLENGE

JOIN IN THE FUN - TURN TO PAGE 88 FOR ENTRY INFO



### BEAUT UTE COMPETITION

JOIN IN THE FUN - TURN TO PAGE 88 FOR ENTRY INFO

### HAYMAKING DEMO

WATCH AS GRASS IS TURNED INTO HAY

### MAD-STYLE-MOTO

INSANE MOTOBIKE TRICKS - BACK FOR 2026

### GUY MCLEAN

SECOND CHANCE TO SEE THE SHOW TONIGHT!  
HORSEMANSHIP DISPLAY - BACK FOR 2026



### DOG HIGH JUMP

JOIN IN THE FUN - TURN TO PAGE 88 FOR DETAILS

### BERRY SHOW YOUNG WOMAN

WATCH AS THE BERRY SHOW YOUNG WOMAN IS ANNOUNCED



### HAYSTACKING COMPETITION

JOIN IN THE FUN - TURN TO PAGE 88 FOR ENTRY INFO

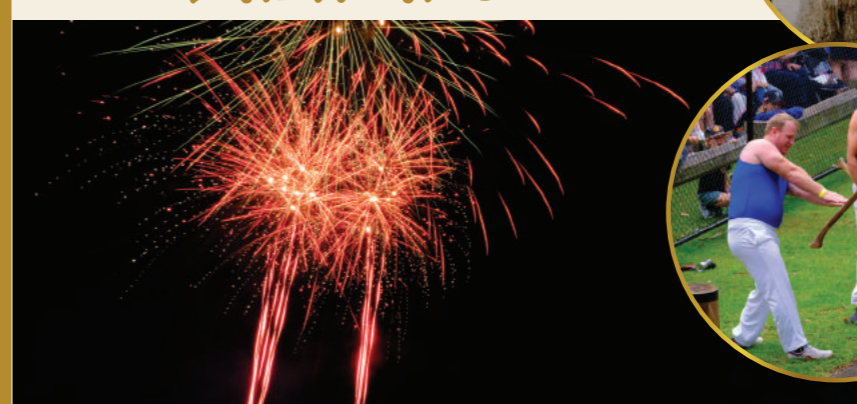
### MAD-STYLE-MOTO

INSANE MOTOBIKE TRICKS - BACK FOR 2026

### GUY MCLEAN

LAST CHANCE TO SEE THE SHOW TONIGHT!  
HORSEMANSHIP DISPLAY - BACK FOR 2026

## FIREWORKS



## SATURDAY DAYTIME 31<sup>ST</sup> JANUARY 2026

## SHOWJUMPING FROM 7.30AM AND HORSE CLASSES FROM 8.30AM (ALL RINGS)



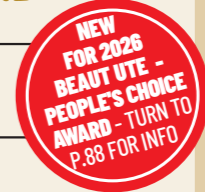
HORSES SCHEDULE  
SEE PAGES 30-42

SHOWJUMPING SCHEDULE  
SEE PAGE 44

## BEEF CATTLE JUDGING

FROM 8.30am  
ON THE CATTLE LAWN  
(SEE MAP PAGE 90)

BEEF CATTLE  
SCHEDULE SEE PAGES 53-55



## FROM 9am-7pm PAVILION

SEE ARTS AND CRAFTS, VEGETABLES, JAMS AND PRESERVES, FLOWERS, PAINTING, PHOTOGRAPHY AND MORE

PAVILION SCHEDULE SEE PAGES 66-86

## 8.30-4pm POULTRY JUDGING

FROM 8.30AM  
AND KIDS ACTIVITIES

POULTRY SCHEDULE SEE PAGES 62-64



JUDGING FROM 9AM

## ANGORA GOATS

GOAT SCHEDULE  
SEE PAGES 56-58



## FROM 9.30am WOODCHOPPING

UPDATED SCHEDULE FOR 2026!

WOODCHOP SCHEDULE  
SEE PAGES 46-47

# Berry Show LIVESTOCK



Livestock remains at the heart of the Berry Show's traditions. Horses of every category, together with beef and dairy cattle, poultry and Angora goats, fill two full days of competition and display.

The 2026 schedule promises a vibrant celebration of livestock breeding, heritage and excellence right across the entire Berry Show.

## SHOWJUMPING

Showjumping at the Berry Show begins Friday at 7.30am, with classes from 90cm to 1.3m, including junior and memorial events. Designed by course builder Mark Atkins and stewarded by Kel Priestley, the program features the Reg McBroom and George Miller Memorial classes, plus the Peter McGlinchey OAM Memorial Pointscore, linking competitions across regional shows. With strong local sponsorship and prize money, spectators can expect fast-paced contests showcasing the skill and partnership of horse and rider, making it a highlight of the day's program. The Showjumping continues on Saturday, also at 7.30am.

**SHOWJUMPING: ENTRY VIA GLOBAL** (GLOBALENTRIESONLINE.COM.AU)  
TURN TO THE SCHEDULE (**SHOWJUMPING - SECTION 2 - PAGE 44**)  
FOR A FULL LIST OF CLASSES, MORE INFO AND SPONSOR LIST.

## DAIRY CATTLE

The local Berry area has long been known for its rich dairy country so it's fitting that the cattle judging starts with the dairy category.

Judging takes place on Friday from 8.30am, showcasing a top-notch exhibition of the major dairy breeds. The judging will take place on the Cattle Lawn next to the Poultry Pavilion.

**HOW TO ENTER DAIRY CATTLE CLASSES:**  
TURN TO THE SCHEDULE (**DAIRY CATTLE - SECTION 4: PAGES 48-52**) FOR A FULL LIST OF CLASSES, MORE INFORMATION AND A SPONSOR LIST.

## BEEF CATTLE

Saturday sees the spotlight shift to beef cattle judging, which kicks-off at 8.30am with the European breeds. The British Breeds competition follows.

The Paraders and the Junior Steer Pointscore Competitions enable younger participants to get involved with classes for participants of all ages.

The beef cattle section draws to a close with the Trade Hoof Competition that is open to steers & heifers, which will later be sold at auction.

Just like the dairy cattle, the beef cattle judging takes place on the Cattle Lawn next to the Poultry Pavilion.

**HOW TO ENTER BEEF CATTLE CLASSES:**  
TURN TO THE SCHEDULE (**BEEF CATTLE - SECTION 5: PAGES 53-56**) FOR A FULL LIST OF CLASSES, MORE INFORMATION AND A SPONSOR LIST.

## HORSE CLASSES

The horse section runs over four rings in the beautiful McGoldrick Main Arena throughout both days of the show. With Friday's events showcasing 25 breeds of horses from Shetland Ponies to Clydesdales presented in front of the Grandstand.

Pony Club events bring the young talent, while the fast-paced sporting events on Friday afternoon never fail to entertain the crowd.

Experience the elegance of the Show Hacks and Hunters as their riders attempt to qualify for a chance to compete at the prestigious Sydney Royal Easter Show.

**HORSE CLASSES: ENTRY VIA GLOBAL** (GLOBALENTRIESONLINE.COM.AU)  
TURN TO THE SCHEDULE (**HORSE CLASSES - SECTION 1: PAGES 30-42**)  
FOR A FULL LIST OF CLASSES, MORE INFO AND SPONSOR LIST.



THANKS TO ALL OUR HORSE SPONSORS  
TURN TO PAGE 30 FOR FULL LIST



We are the leading produce, stock, rural and farm supplies store in Nowra and the Shoalhaven.



Come in-store to view our range of products

Bomaderry – 4421 2215  
South Nowra - 4423 2359  
Milton – 4455 1344  
Moruya – 4474 3269

or online at:  
[bishopsonline.com.au](http://bishopsonline.com.au)

LIVESTOCK FARM & RURAL FENCING HOME GARDEN PET SUPPLIES



*Cellar Door & Tasting*  
*Dining & Events*  
*Boutique Accommodation*  
*Alpacas*  
*EV Charging*

**Proud Sponsor  
of the 2026  
Berry Show**



**Cellar door** 11am – 5pm, 7 days a week.  
(closed Christmas Day, New Years Day & Good Friday)

**Silos Kitchen** Lunch – Fri, Sat & Sun  
**Accommodation** – 7 days a week



t: 02 4448 6082 e: [silosestate@silosestate.com](mailto:silosestate@silosestate.com) w: [www.silosestate.com](http://www.silosestate.com)

# Berry Show LIVESTOCK



Adjacent to the Cattle Lawn and just outside the McGoldrick Main Arena, you'll find the Berry Getaways Poultry Pavilion. Nearby the Goat Shed is home to the Angora Goats. You can watch the judging in these sections, or simply stop by for a visit.

## ANGORA GOATS

Goats have been an integral part of the Berry Show since the 1980s. In 2026 the goat section features classes exclusively for Angora goats, a unique breed of goat primarily known for its luxurious fibre which is highly valued in the textile industry. Angora goats can thrive on land that might not be suitable for other livestock contributing to sustainable land use.

Angora goat judging begins at 9am (a change from last year) in the Goat Shed. Classes on offer are Fleece, Doe, Buck and Speciality.

### HOW TO ENTER ANGORA GOAT CLASSES:

FOR A FULL LIST OF CLASSES & MORE INFORMATION, TURN TO THE SCHEDULE (ANGORA GOATS - SECTION 6: PAGES 57-58)

## POULTRY

Friday at the Berry Getaways Poultry Pavilion is all about highlighting rare and unique poultry breeds. Knowledgeable breeders will be available to provide insights into the showcased breeds and answer any poultry-related enquiries you might have.

The Poultry judging takes place exclusively on Saturday, commencing at 8.30am. The Berry Show features a diverse array of poultry breeds, including waterfowl. In addition to classes for exhibition breeds, there are categories for backyard birds and junior participants to join in the excitement.

You can also test your poultry general knowledge with our interesting poultry facts and displays, while a variety of children's activities from painting to chicken themed games are available for the younger poultry fans!

This year there are brand new junior craft classes - see the schedule for more information.

### HOW TO ENTER POULTRY CLASSES:

FOR A FULL LIST OF CLASSES AND MORE INFORMATION, TURN TO THE SCHEDULE (POULTRY - SECTION 8: PAGES 62-64)



WITH THANKS TO OUR SPONSOR:  
BERRY BOER



WITH THANKS TO OUR SPONSOR:  
BERRY GETAWAYS



*The way the locals like it!*

Find us at:

🏠 123 Queen Street Berry NSW 2535

Contact us on: **02 4464 1239**

✉ shop@igaberry.com.au 📱 berryigaplusliquor

**Open 7 Days 6-9pm**

**Family Owned and Operated for Over 40 Years**

Welcome to the  
**SHOALHAVEN HEADS**

THE  
**LOCAL GROCER**  
IGA

**SHOALHAVEN HEADS**

**OPEN 7 DAYS  
6AM - 8PM**

FIND US

SHOP 4,  
121 SHOALHAVEN HEADS ROAD  
SHOALHAVEN HEADS

CALL US

**02 4408 3018**

EMAIL US

SHOP@HEADSIGA.COM.AU

FOLLOW US

SHOALHAVEN HEADS IGA 📱

HORSE - SECTION 1

CHIEF STEWARD:	Gillian Orford
HORSE ADMINISTRATOR:	Gillian Orford : berryshowhorsea@hotmail.com
ANNOUNCERS' BOX ENTRY STEWARDS:	David Edmonstone, David Boyle & Kelly Edmonstone.
MASTER RING STEWARD:	John Miller
RING STEWARDS:	Kim Bailey, Chris Carter, Paul Condon, Jeremy Christley, Keith Downes, Paul Evert, Scott Galbraith, Anthony Lewis, John Mathers, Will Miller, Paul Timbs, Ray Watson, Stuart Yeatman & Liz Yeatman.

General conditions for all horse events    Entries on Global - [www.globalentriesonline.com.au](http://www.globalentriesonline.com.au)

Entries to be on Global by 9pm on Monday, 26<sup>th</sup> January 2026. No entries taken on the days of the Show.

ALL EXHIBITORS & SUPPORTERS MUST PAY GATE ENTRY

FEES - \$5 per class entry, unless otherwise stated in Showjumping.

All competitors and supporters to pre-purchase Show entry tickets online - [berryshow.org.au](http://berryshow.org.au)

Conditions	
1. Parking in the Showground camping area, between the Woodchop and the Poultry Shed. Enter through the southern gate.	8. Stallion Riders/Handlers must be 18 years of age or over.
2. Absolutely no temporary yards.	9. Rules for Showjumping Competitions under E.A. rules penalties and marking.
3. Everyone entering the ring must sign a waiver available from the announcer's box and wear the wristband offered by the entry stewards.	10. Competitors in all jumping events must wear clean E.A. approved attire, otherwise they will be disqualified from competing.
4. Every animal must be under thorough control, otherwise the animal will not be allowed to compete.	11. IMPROPER BEHAVIOUR - Outside assistance to competitors by word, by radio or any other method in horse ring events will NOT be permitted. If in breach of this ruling, competitors and their exhibits may be dismissed from the event and from the Showground.
5. Everyone entering the ring must wear appropriate foot wear – this includes supporters and assistants	12. The Society reserves the right to have any competition animal entry tested for prohibited substances. Any competitor found to have breached the ASC disputes and disciplinary regulations will be investigated by the ASC Disciplinary Committee.
6. All classes under the heading of "Novice" events are for horses which have not won a first prize at any Show up to the date of competition. Winners in Novice Classes can compete in Open Classes.	13. All veterinary charges must be paid for by the owner of animals.
7. All extra open classes are for horses that have not won an earlier open class. They will not incur an entry fee or present prize money.	

Horse yards: \$20 for 2 days. Yards are limited and therefore must be booked and paid for before the Show. Exhibitors/competitors are encouraged to have identification cards with details of horse and rider available.

HORSES - RING ONE – FRIDAY, STARTS 10am

Entry \$5 per class, Prize money - 1<sup>st</sup> \$10, 2<sup>nd</sup> \$5, sponsored by ARP SURVEYORS

All entries must be made on Global by Monday 26<sup>th</sup> January 2026, 9pm

HEAVY HORSE CLASSES

Point Score Competition - \$100 open order donated by BISHOPS SOUTH NOWRA for the KIAMA, BERRY, NOWRA SHOWS. One point for each heavy horse entered at these shows. The winner is the competitor with the most points from the three shows. Stallion riders/handlers must be 18 years plus.

CLYDESDALES Must be registered

Class 101	Filly or Colt, foal or yearling (eligible to enter champion class)	Class 105	Mare, 3 yrs and over
Class 102	Colt, over 1 yr and under 3 yrs	Class 106	Gelding, any age
Class 103	Stallion, 3 yrs and over		
Class 104	Filly, over 1 yr and under 3 yrs		

**CHAMPION CLYDESDALE**  
**\$100 + ribbon, F.E. & P.J. KALE MEMORIAL RESERVE**  
**CHAMPION CLYDESDALE - \$50 + ribbon**

SHIRE HORSES Must be registered

Class 107	Filly or Colt, foal or yearling (eligible to enter champion class)	Class 111	Mare, 3 yrs and over
Class 108	Colt, over 1 yr and under 3 yrs	Class 112	Gelding any age
Class 109	Stallion, 3 yrs and over		
Class 110	Filly, over 1 yr and under 3 yrs		

**CHAMPION SHIRE HORSE - \$20 + ribbon**  
**RESERVE CHAMPION SHIRE HORSE - \$10 + ribbon**

OTHER HEAVY HORSES

Class 113	Stallion or Colt		
Class 114	Mare or Filly		
Class 115	Gelding		

**CHAMPION OTHER HEAVY HORSE - \$20 + ribbon**  
**RESERVE CHAMPION OTHER HEAVY HORSE \$10 + ribbon**  
Class 116 Heavy horse ridden

HEAVY HORSES DRIVEN

Class 117	Heavy Horse long rein driving (any breed)	Class 118	Heavy Horses vehicle, (any type)
-----------	---	-----------	----------------------------------



Over 36 Years' Experience in Music and Music Education

Band / Orchestral Instruments and Accessories  
Sheet Music | Gifts and Apparel  
Audio Equipment and Accessories

Guitar Lessons Now Available!

BERRY MUSIC CENTRE  
Your Online Music Store

[berrymusiccentre@gmail.com](mailto:berrymusiccentre@gmail.com)

Phone: 02 4464 1284

[www.berrymusiccentre.com.au](http://www.berrymusiccentre.com.au)



We are a small Surveying firm completing work from Nowra through to the greater Sydney Basin. We complete small scale to medium residential and commercial projects. We specialise in boundary definition and complete all aspects of property boundary work.

At ARP we know that our fundamental role is:

To make your job Easy

Deliver precise, accurate and effective reports

Rapidly respond to what you need



If you would like a discussion about your needs, at any time please call Rob 0422 816 957

HORSES - RING TWO – FRIDAY, STARTS 9am

Entry \$5 per class    Prize Money - 1<sup>st</sup> \$10, 2<sup>nd</sup> \$5, sponsored by LINNAEUS COLLECTION BERRY

All entries must be made on Global by Monday 26<sup>th</sup> January 2026, 9pm

MINIATURE HORSES Must be registered & financial

Height not to exceed 10.2 hands

Class 201	Filly or Mare
Class 202	Colt or Stallion
Class 203	Gelding

**CHAMPION MINIATURE HORSE - \$20 + ribbon**

**RESERVE CHAMPION MINIATURE HORSE - \$10 + ribbon**

MINIATURE PONIES Must be registered & financial

All ponies must be registered and height must not exceed 87cm

Class 204	Filly or Mare
Class 205	Colt or Stallion
Class 206	Gelding

**CHAMPION MINIATURE PONY - \$20 + ribbon**

**RESERVE CHAMPION MINIATURE PONY - \$10 + ribbon**

SHETLANDS Must be registered & financial with the APSBS

Class 207	Yearling Shetland
Class 208	2-year Shetland
Class 209	3-year Shetland

**CHAMPION YOUNGSTOCK SHETLAND - \$20 + ribbon**  
**RESERVE CHAMPION YOUNGSTOCK SHETLAND \$10 + ribbon**

Class 210	Shetland Pony, Gelding 4yrs and over n/e 9.2hh
Class 211	Shetland Pony, Gelding 4 yrs and over, over 9.2hh n/e 10.2hh

**CHAMPION GELDING SHETLAND - \$20 + ribbon**  
**RESERVE CHAMPION GELDING SHETLAND \$10 + ribbon**

Class 212	Shetland Pony, Mare, 4 yrs and over n/e 9.2hh
Class 213	Shetland Pony, Mare, 4 yrs and over, over 9.2hh n/e 10.2hh
Class 214	Shetland Brood Mare, any age

**CHAMPION MARE SHETLAND - \$20 + ribbon**

**RESERVE CHAMPION MARE SHETLAND - \$10 + ribbon**

Class 215	Shetland Pony, Colt, 4 yrs and over, n/e 9.2hh
Class 216	Shetland Pony, Stallion, 4 yrs and over, over 9.2hh n/e 10.2hh

**CHAMPION STALLION SHETLAND - \$20 + ribbon**  
**RESERVE CHAMPION STALLION SHETLAND \$10 + ribbon**

**SUPREME LED SHETLAND EXHIBIT - \$20 + ribbon,**  
**Trophy donated by "SHAMBALA PARK" SHETLAND STUD**

Class 217	Shetland Pony Ridden
Class 218	Leading Rein Shetland Pony, Rider under 8 years, Handler 17 years or older
Class 219	Shetland in Harness
Class 220	Mini Horse/ Pony Harness

WELSH PONIES Section A Must be registered & financial with APSB or WPCS

Class 221	Led Colt or Stallion	CHAMPION SECTION A WELSH - \$20 + ribbon
Class 222	Led Filly or Mare	RESERVE CHAMPION SECTION A WELSH - \$10 + ribbon
Class 223	Led Gelding	

WELSH PONIES - Section B

Class 224	Led Colt or Stallion	CHAMPION SECTION B WELSH - \$20 + ribbon
Class 225	Led Filly or Mare	RESERVE CHAMPION SECTION B WELSH - \$10 + ribbon
Class 226	Led Gelding	

WELSH PONIES - Section C/D

Class 227	Led Colt or Stallion	CHAMPION SECTION C/D WELSH - \$20 + ribbon
Class 228	Led Filly or Mare	RESERVE CHAMPION SECTION C/D WELSH
Class 229	Led Gelding	\$10 + ribbon

PART-BRED WELSH PONIES Must be registered & financial

Class 230	Led Colt or Stallion	CHAMPION PART-BRED WELSH PONY - \$20 + ribbon
Class 231	Led Filly or Mare under 13 hands	RESERVE CHAMPION PART-BRED WELSH PONY
Class 232	Led Filly or Mare over 13 hands	\$10 + ribbon
Class 233	Led Gelding under 13 hands	
Class 234	Led Gelding over 13 hands	

CONNEMARA PONIES Must be registered

Class 235	Led Filly or Mare	CHAMPION LED CONNEMARA PONY - \$20 + ribbon
Class 236	Led Colt or Stallion	RESERVE CHAMPION LED CONNEMARA PONY
Class 237	Led Gelding	\$10 + ribbon

RIDING PONIES Must be registered & financial with RPSBS

Class 238	Led Colt or Stallion	CHAMPION RIDING PONY - \$20 + ribbon
Class 239	Led Filly or Mare	RESERVE CHAMPION RIDING PONY - \$10 + ribbon
Class 240	Led Gelding	

AUSTRALIAN PONIES Must be registered as Australian Pony & financial with APSB

Class 241	Led Colt or Stallion	CHAMPION LED AUSTRALIAN PONY - \$20 + ribbon
Class 242	Led Filly or Mare	RESERVE CHAMPION LED AUSTRALIAN PONY
Class 243	Led Gelding	\$10 + ribbon

AUSTRALIAN SADDLE PONIES Must be registered & financial with ASPA

Class 244	Led Colt or Stallion	CHAMPION LED ASPA PONY - \$20 + ribbon
Class 245	Led Filly or Mare	RESERVE CHAMPION LED ASPA PONY - \$10 + ribbon
Class 246	Led Gelding	

RIDDEN WELSH PONIES Must be registered & financial

Class 247	Section A, Stallion, Mare or Gelding	CHAMPION RIDDEN WELSH PONY - \$20 + ribbon
Class 248	Section B, Stallion, Mare or Gelding	RESERVE CHAMPION RIDDEN WELSH PONY
Class 249	Section C/D, Stallion, Mare or Gelding	\$10 + ribbon

RIDDEN BREEDS PONIES Must be registered

Class 250	Ridden Connemara Pony	CHAMPION RIDDEN BREEDS PONY - \$20 + ribbon
Class 251	Ridden Part-Bred Welsh under 13 hands	RESERVE CHAMPION RIDDEN BREEDS PONY
Class 252	Ridden Part-Bred Welsh over 13 hands	\$10 + ribbon
Class 253	Ridden Riding Pony	
Class 254	Ridden Australian Pony	
Class 255	Ridden Australian Saddle Pony	



HORSES - RING THREE – FRIDAY, STARTS 9am

Entry \$5 per class    Ribbons and Prize Money - 1<sup>st</sup> \$10, 2<sup>nd</sup> \$5, sponsored by SHOREBREAK FINANCE  
Stallion riders / handlers must be 18 years plus

All entries must be made on Global by Monday 26<sup>th</sup> January 2026, 9pm

THOROUGHBREDS Must be registered

Class 301	Led Colt or Stallion	CHAMPION LED THOROUGHBRED - \$20 + ribbon
Class 302	Led Filly or Mare	RESERVE CHAMPION LED THOROUGHBRED
Class 303	Led Gelding	\$10 + ribbon

WARMBLOODS Must be registered

Class 304	Led Colt or Stallion	CHAMPION WARMBLOOD - \$20 + ribbon
Class 305	Led Filly or Mare	RESERVE CHAMPION WARMBLOOD - \$10 + ribbon
Class 306	Led Gelding	

STANDARDBREDS Must be registered

Class 307	Led Colt or Stallion	CHAMPION STANDARDBRED - \$20 + ribbon
Class 308	Led Filly or Mare	RESERVE CHAMPION STANDARDBRED - \$10 + ribbon
Class 309	Led Gelding	

BAROQUE HORSES Must be registered


Class 310	Led Colt or Stallion	CHAMPION BAROQUE HORSE - \$20 + ribbon
Class 311	Led Filly or Mare	RESERVE CHAMPION BAROQUE HORSE - \$10 + ribbon
Class 312	Led Gelding	

RIDDEN LARGE BREEDS Must be registered

Class 313	Ridden Thoroughbred	CHAMPION RIDDEN LARGE BREED - \$20 + ribbon
Class 314	Ridden Warmblood	RESERVE CHAMPION RIDDEN LARGE BREED
Class 315	Ridden Standardbred	\$10 + ribbon
Class 316	Ridden Baroque Horse	



02 4411 1055  
admin@cstrees.com.au



# Trusted & Affordable Tree Care Services

Specialising in the removal of hard to access trees

C & S Tree Services is a tree maintenance company in Nowra proudly servicing the Shoalhaven area, from Gerringong to Kangaroo Valley to Ulladulla. We are dedicated to maintaining a high level of safety while providing efficient, cost-effective tree removal and maintenance services. Our qualified tree climbers specialise in hard access work

Tree Removal and Cutting | Tree Trimming & Pruning  
Stump Grinding | Chipping & Mulching | Block Clearing  
Firewood for Sale | Mulch for Sale  
www.cstreeservices.com.au



EST. 1978

# HORSE LAND WOLLONGONG

## (02) 4257 6655

3/60-64 PRINCES HWY,  
YALLAH NSW 2530

### ALL THE BRANDS YOU KNOW AND LOVE:

- Weatherbeeta
- Dublin
- Kool Coat
- Saxon
- Collegiate
- Bates
- Wintec
- Hairy Pony

- Ringers Western
- Ariat
- Thomas Cook
- Wrangler
- Pure Western
- Samshield
- Kask
- Just Country

- Roma
- Albion
- Charles Owen
- Kep
- Syd Hill
- Joseph John
- Combat
- And More

QUARTER HORSE Must be registered		
Class 317	Filly or Mare	CHAMPION QUARTER HORSE - \$20 + ribbon
Class 318	Colt or Stallion	RESERVE CHAMPION QUARTER HORSE - \$10 + ribbon
Class 319	Gelding	
APPALOOSA Must be registered		
Class 320	Filly or Mare	CHAMPION APPALOOSA EXHIBIT - \$20 + ribbon
Class 321	Colt or Stallion	RESERVE CHAMPION APPALOOSA EXHIBIT - \$10 + ribbon
Class 322	Gelding	
PAINT Must be registered		
Class 323	Filly or Mare	CHAMPION PAINT EXHIBIT - \$20 + ribbon
Class 324	Colt or Stallion	RESERVE CHAMPION PAINT EXHIBIT - \$10 + ribbon
Class 325	Gelding	
PINTO Must be registered		
Class 326	Filly or Mare	CHAMPION PINTO EXHIBIT - \$20 + ribbon
Class 327	Colt or Stallion	RESERVE CHAMPION PINTO EXHIBIT - \$10 + ribbon
Class 328	Gelding	
PALOMINO Must be registered		
Class 329	Filly or Mare	CHAMPION PALOMINO EXHIBIT - \$20 + ribbon
Class 330	Colt or Stallion	RESERVE CHAMPION PALOMINO EXHIBIT - \$10 + ribbon
Class 331	Gelding	
BUCKSKIN Must be registered		
Class 332	Filly or Mare	CHAMPION BUCKSKIN EXHIBIT - \$20 + ribbon
Class 333	Colt or Stallion	RESERVE CHAMPION BUCKSKIN EXHIBIT - \$10 + ribbon
Class 334	Gelding	
RIDDEN OTHER BREEDS HORSE Must be registered		
Class 335	Ridden Appaloosa	Class 340 Ridden Quarter Horse CHAMPION RIDDEN OTHER BREEDS HORSE - \$20 + ribbon RESERVE CHAMPION RIDDEN OTHER BREEDS HORSE \$10 + ribbon
Class 336	Ridden Pinto	
Class 337	Ridden Paint	
Class 338	Ridden Palomino	
Class 339	Ridden Buckskin	

SPORTING CLASSES STARTS AT APPROX 4PM, FRIDAY

Rules for the Conduct of Bending Races	
1.	There will be five pegs.
2.	The distance between the start line and the first peg will be 9 metres, distance between pegs to be 6 metres.
3.	Each competitor must LEAVE the first peg on their right.
4.	Each competitor must keep within their marked lane, leaving the lane will mean disqualification.
5.	Knocking any peg down will mean disqualification.
6.	Winners will be awarded on fastest time.
7.	The rider of the first HORSE past the winning post will be declared the winner, only when they are mounted on their horse, all pegs in their line are standing, and they have completed the course in accordance with these rules.

Rules for the Conduct of Flag Races	
1.	There will be a cask and five pegs with detachable flags on each.
2.	Distance between pegs to be 6 metres and from the cask to the first peg to be 9 metres.
3.	Spacing between lines of pegs to be 12 metres and there is no limit to the lines of pegs used.
4.	The cask to be a peg with a bag attached to the top to collect the flags. Height of peg when driven in to be 150 cm.
5.	Each competitor must take the furthest peg first.
6.	If the cask is knocked down the competitor must dismount re-erect it before remounting and continuing.
7.	Should the competitor fail to lodge any of the flags in the cask they must dismount, pick up the flag, mount, replace the flag in the cask and finish.
8.	Each competitor must keep to their own lane of pegs. A line of demarcation will be marked with witches hats, 6 metres each side of the pegs and each competitor must keep within these lines.
Crossing these lines will mean disqualification.	
9.	Winners will be awarded on the fastest time.
10.	Should any owner have more than one horse in the final, they are to provide another rider.
11.	The rider of the first HORSE past the winning post will be declared the winner, only when they are mounted on their horse, has the five flags in the cask and has completed the course, in accordance with the rules.
Rules for the Conduct of The Barrels Race	
1.	Each rider must ride a clover leaf pattern.
2.	If a Barrel is knocked down a 5 second penalty will be awarded for each barrel displaced.
3.	Winners will be awarded on the fastest time.
4.	The rider must be mounted on their horse as they pass the finish line to be considered for an eligible time.
SPORT 1 - Flag Race, 14yrs & under	
SPORT 2 - Flag Race, Open	
SPORT 3 - Bending Race, 14yrs & under	
SPORT 4 - Bending Race, Open	
SPORT 5 - Barrel Race, 14yrs & under	
SPORT 6 - Barrel Race, Open	

PROUD SPONSOR OF

# Axemen and Sawyers Bar & Woodchop

Berry Show 2026

# BROUGHTON.

landscapes. design / construct / maintain

Servicing the South Coast and the Southern Highlands

t: 0412 740 131  
w: broughtonlandscapes.com.au

Est 1995 | Licence no. 71516c

THANKS TO OUR SPONSOR

SPONSORED BY:

BROUGHTON LANDSCAPES

# Axemen and Sawyers Bar

Located next to the woodchop area under the trees, the Axemen and Sawyers Bar is the ideal place where you and your friends can come and relax and reminisce.

Serving refreshing beverages from 10am Friday and Saturday.

Enjoy the family friendly beer garden and live entertainment in the afternoons and evenings.

Take the time to soak up the atmosphere and relax at this popular venue.

LIVE MUSIC AT THE BAR THROUGHOUT THE AFTERNOON AND EVENING

HORSES - RING FOUR – FRIDAY, STARTS 9am

PONY CLUB EVENTS

Entry \$5 per class, Prize money - 1<sup>st</sup> \$10, 2<sup>nd</sup> \$5, **sponsored by ILLAWARRA EQUINE CENTRE**

**All entries must be made on Global by Monday 26<sup>th</sup> January 2026, 9pm**

To be conducted under the rules of the PCA of NSW Inc. Mount must be owned and ridden by an affiliated member of Pony Club. One horse, one rider rule applies. The only acceptable helmet for use during Pony Club events is that which carries stamped or embossed standard AS/NZ 3838.

Class 501	Best Presented Mount + Rider, under 13 years	Class 508	Pony Club Boy or Girl Rider, 15 years & under 17 years
Class 502	Best Presented Mount + Rider, 13 years and under 25 years	Class 509	Pony Club Rider, 17 years & under 25 years
Class 503	Pony Club Boy or Girl, Tiny Tot/ Led rider, under 8 years (not eligible for Champion or class 504)	<b>CHAMPION PONY CLUB RIDER 13 YEARS &amp; UNDER 25 YEARS - \$20 + ribbon</b>	
Class 504	Pony Club Boy or Girl Rider, under 8 years	<b>RESERVE CHAMPION PONY CLUB RIDER 13 YEARS &amp; UNDER 25 YEARS - \$10 + ribbon</b>	
Class 505	Pony Club Boy or Girl Rider, 8 years & under 11 years	Class 510	Pony Club Mount not exceeding 14 hands, snaffle bit only
Class 506	Pony Club Boy or Girl Rider, 11 years & under 13 years	Class 511	Pony Club Mount over 14 hands n/e 15 hands, snaffle bit only
<b>CHAMPION PONY CLUB RIDER UNDER 13 YEARS \$20 + ribbon</b>		Class 512	Pony Club Mount over 15 hands, snaffle bit only
<b>RESERVE CHAMPION PONY CLUB RIDER UNDER 13 YEARS \$10 + ribbon</b>		Class 513	Pair Pony Club Riders, under 15 years
Class 507	Pony Club Boy or Girl Rider, 13 years & under 15 years	Class 514	Pair Pony Club Riders, 15 years & under 25 years
		Class 515	Team of 4 Pony Club Riders

ARABIANS

Entry \$5 per class, Prize money -1<sup>st</sup> \$10, 2<sup>nd</sup> \$5 (unless otherwise stated), **sponsored by THE OUTLAWS**

**All entries must be made on Global by Monday 26<sup>th</sup> January 2026, 9pm**

Proof of registration MUST be shown if requested by Judge, Steward or Show Official.  
Stallion riders/handlers must be 18 years plus

PUREBRED ARABIANS Must be registered & financial with AHSA.

Class 516	Classic Head	Class 520	Led Gelding
Class 517	Classic Trot	<b>CHAMPION LED PUREBRED ARABIAN - \$20 + ribbon</b>	
Class 518	Led Stallion or Colt	<b>RESERVE CHAMPION LED PUREBRED ARABIAN \$10 + ribbon</b>	
Class 519	Led Mare or Filly		

ARABIAN DERIVATIVES Must be registered & financial with AHSA

Class 521	Classic Head	Class 525	Led Gelding
Class 522	Classic Trot	<b>CHAMPION LED DERIVATIVE - \$20 + ribbon</b>	
Class 523	Led Stallion or Colt	<b>RESERVE CHAMPION LED DERIVATIVE - \$10 + ribbon</b>	
Class 524	Led Mare or Filly		

RIDDEN PUREBRED ARABIANS Must be registered & financial with AHSA

Class 526	Ridden Stallion	<b>CHAMPION RIDDEN ARABIAN - \$20 + ribbon</b>	
Class 527	Ridden Mare	<b>RESERVE CHAMPION RIDDEN ARABIAN - \$10 + ribbon</b>	
Class 528	Ridden Gelding		

RIDDEN ARABIAN DERIVATIVES Must be registered & financial with AHSA

Class 529	Ridden Stallion	<b>CHAMPION RIDDEN ARABIAN DERIVATIVE - \$20 + ribbon</b>	
Class 530	Ridden Mare, under 14.2 hands	<b>RESERVE CHAMPION RIDDEN ARABIAN DERIVATIVE \$10 + ribbon</b>	
Class 531	Ridden Mare, 14.2 hands and over	Class 534	Led Endurance Arabian
Class 532	Ridden Gelding, under 14.2 hands	Class 535	Ridden Endurance Arabian
Class 533	Ridden Gelding, 14.2 hands and over	1 <sup>st</sup> \$500, 2 <sup>nd</sup> \$200, <b>sponsored by THE OUTLAWS</b>	
		Class 536	Arabian Costume



HORSES - RING ONE – SATURDAY, STARTS 8.30am

Entry Fee: \$5 per class Ribbons and Prize Money - 1<sup>st</sup> \$10, 2<sup>nd</sup> \$5, **sponsored by ILLAWARRA EQUINE CENTRE**

**All entries must be made on Global by Monday 26<sup>th</sup> January 2026, 9pm**

RIDING JUNIOR CHILD RIDERS

Class 11001	Tiny Tot, Boy under 4 yrs, must be led
Class 11002	Tiny Tot, Girl under 4 yrs, must be led
Class 11003	Boy rider, 4 yrs and under 6 yrs, may be led
Class 11004	Girl rider, 4 yrs and under 6 yrs, may be led
Class 11005	Boy rider, 6 yrs and under 9 yrs
Class 11006	Girl rider, 6 yrs and under 9 yrs
Class 11007	Boy rider, 9 yrs and under 12 yrs
Class 11008	Girl rider, 9 yrs and under 12 yrs
<b>CHAMPION JUNIOR BOY RIDER UNDER 12 YRS - \$20 + ribbon</b>	
<b>RESERVE CHAMPION JUNIOR BOY RIDER UNDER 12 YRS \$10 + ribbon</b>	

<b>CHAMPION JUNIOR GIRL RIDER UNDER 12 YRS \$20 + ribbon</b>	
<b>RESERVE CHAMPION JUNIOR GIRL RIDER UNDER 12 YRS \$10 + ribbon</b>	
Class 11009	Best presented pony to be ridden by child under 9 yrs
Class 11010	Best presented pony to be ridden by child 9 yrs and under 12 yrs
Class 11011	Pair of Riders under 12 yrs

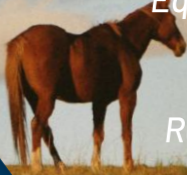
OPEN PONY HACKS Cannot compete in Show Hunter Classes

Class 11012	Novice Pony Hack n/e 14 hands	Class 11022	Open Pony Hack over 13 n/e 14 hands – eligibility (must have entered in, but not won an open class today)
Class 11013	Open Pony Hack n/e 12 hands	<b>CHAMPION PONY HACK n/e 13 hands \$20 + TOM LIDBETTER MEMORIAL Ribbon, Prize donated by HORSELAND WOLLONGONG</b>	
Class 11014	Open Pony Hack over 12 h n/e 12.2 hands	<b>RESERVE CHAMPION PONY HACK n/e 13 hands \$10 + ribbon</b>	
Class 11015	Open Pony Hack over 12.2 h n/e 13 hands	<b>CHAMPION PONY HACK over 13 hands n/e 14 hands \$20 + ribbon, Prize donated by HORSELAND WOLLONGONG</b>	
Class 11016	Open Pony Hack over 13 h n/e 13.2 hands	<b>RESERVE CHAMPION PONY HACK over 13 hands n/e 14 hands - \$10 + ribbon</b>	
Class 11017	Open Pony Hack over 13.2 h n/e 14 hands		
Class 11018	Child's Pony - rider under 12 years (Can not compete in Adult or other Child Classes)		
Class 11019	Child's Pony - rider 12 years and under 17 years (Can not compete in Adult or other Child Classes)		
Class 11020	Adult's Pony n/e 14 hands (Can not compete in Child Classes)		
Class 11021	Open Pony Hack n/e 13 hands – eligibility (must have entered in, but not won an open class today)		

Protecting farms & small businesses  
across the South Coast



General insurance advice  
All types of farming  
Equipment & machinery  
Hobby farms  
Residential & domestic  
Business & commercial



SHOW HUNTER PONIES Cannot compete in Open Pony Classes

Class 11023	Novice Show Hunter Pony n/e 14 hands	<b>CHAMPION SHOW HUNTER PONY n/e 13 hands</b> <b>\$20 + ribbon,</b> <b>prize donated by HORSELAND WOLLONGONG</b>
Class 11024	Open Show Hunter Pony n/e 12 hands	<b>RESERVE CHAMPION SHOW HUNTER PONY n/e 13 hands</b> <b>\$10 + ribbon</b>
Class 11025	Open Show Hunter Pony over 12h n/e 12.2 hands	<b>CHAMPION SHOW HUNTER PONY over 13 h n/e 14 hands</b> <b>\$20 + ribbon,</b> <b>prize donated by HORSELAND WOLLONGONG</b>
Class 11026	Open Show Hunter Pony over 12.2 h n/e 13 hands	<b>RESERVE CHAMPION SHOW HUNTER PONY over 13 h n/e</b> <b>14 hands - \$10 + ribbon</b>
Class 11027	Open Show Hunter Pony over 13 h n/e 13.2 hands	
Class 11028	Open Show Hunter Pony over 13.2 h n/e 14 hands	
Class 11029	Child's Show Hunter Pony (rider under 17 yrs cannot compete in Adult Class)	
Class 11030	Adult's Show Hunter Pony (cannot compete in Child Class)	
Class 11031	Open Show Hunter Pony n/e 13 hands – eligibility (must have entered in, but not won an open Show Hunter class today)	
Class 11032	Open Show Hunter Pony over 13 hands n/e 14 hands – eligibility (must have entered in, but not won an open Show Hunter class today)	

HORSES - RING TWO – SATURDAY, STARTS 8.30am

Entry \$5 per Class Ribbons and Prize Money - 1<sup>st</sup> \$10, 2<sup>nd</sup> \$5, **sponsored by LINNAEUS COLLECTION BERRY**  
**All entries must be made on Global by Monday 26<sup>th</sup> January 2026, 9pm**

SENIOR CHILD RIDER

Class 2201	Boy rider, 12 yrs and under 15 yrs	<b>CHAMPION SENIOR GIRL RIDER - \$20 BRIAN McGOLDRICK</b>
Class 2202	Girl rider, 12 yrs and under 15 yrs	<b>MEMORIAL ribbon, sponsored by</b>
Class 2203	Boy rider, 15 yrs and under 17 yrs	<b>THE McGOLDRICK FAMILY</b>
Class 2204	Girl rider, 15 yrs and under 17 yrs	<b>RESERVE CHAMPION SENIOR GIRL RIDER - \$10 + ribbon</b>
<b>CHAMPION SENIOR BOY RIDER</b> <b>\$20 LYLE BRANDON MEMORIAL Ribbon</b>		Class 2205 Best pair of Riders, 12 yrs and under 17 yrs
<b>RESERVE CHAMPION SENIOR BOY RIDER - \$10 + ribbon</b>		Class 2206 Disabled/special needs rider any age-To be held at 10am (Ring will stop at this time for this class)

OPEN GALLOWAY Cannot compete in Show Hunter Classes

Class 2207	Novice Galloway over 14 hands n/e 15 hands	Class 2215	Open Galloway Hack over 14.2 n/e 15 hands – eligibility (must have entered in, but not won a galloway class today)
Class 2208	Open Lightweight Galloway over 14 hands n/e 14.2 hands		<b>CHAMPION GALLOWAY HACK over 14 hands n/e 14.2 hands - \$20 + ribbon, prize donated by HORSELAND WOLLONGONG</b>
Class 2209	Open Heavyweight Galloway over 14 hands n/e 14.2 hands		<b>RESERVE CHAMPION GALLOWAY HACK over 14 hands n/e 14.2 hands - \$10 + ribbon</b>
Class 2210	Open Lightweight Galloway over 14.2 hands n/e 15 hands		<b>CHAMPION GALLOWAY HACK over 14.2 hands n/e 15 hands - \$20 + ribbon, prize donated by HORSELAND WOLLONGONG</b>
Class 2211	Open Heavyweight Galloway over 14.2 hands n/e 15 hands		<b>RESERVE CHAMPION GALLOWAY HACK OVER 14.2 hands n/e 15 hands - \$10 + ribbon</b>
Class 2212	Child's Galloway over 14 hands n/e 15 hands (rider under 17 yrs, cannot compete in Adult Class)		
Class 2213	Adult's Galloway over 14 hands n/e 15 hands (rider over 17 yrs, cannot compete in Child Class)		
Class 2214	Open Galloway Hacks over 14 h n/e 14.2 hands - eligibility (must have entered in, but not won a galloway class today)		

SHOW HUNTER GALLOWAY Cannot compete in Open Galloway Classes

Class 2216	Novice Show Hunter Galloway over 14 hands n/e 15 hands	Class 2222	Open Show Hunter Galloway over 14.2 hands n/e 15 hands – eligibility (Must have entered in but not have won an open Show Hunter class today)
Class 2217	Open Show Hunter Galloway over 14 hands n/e 14.2 hands	<b>CHAMPION SHOW HUNTER GALLOWAY over 14 h n/e 14.2 hands - \$20 + ribbon, prize donated by HORSELAND WOLLONGONG</b>	
Class 2218	Open Show Hunter Galloway over 14.2 hands n/e 15 hands	<b>RESERVE CHAMPION SHOW HUNTER GALLOWAY over 14 h n/e 14.2 hands - \$10 + ribbon</b>	
Class 2219	Child's Show Hunter Galloway, rider under 17 yrs (cannot compete in Adult Class)	<b>CHAMPION SHOW HUNTER GALLOWAY over 14.2 h n/e 15 hands - \$20 + ribbon, prize donated by HORSELAND WOLLONGONG</b>	
Class 2220	Adult's Show Hunter Galloway, rider over 17 yrs (cannot compete in Child Class)	<b>RESERVE CHAMPION SHOW HUNTER GALLOWAY over 14.2 h n/e 15 hands - \$10 + ribbon</b>	
Class 2221	Open Show Hunter Galloway over 14 hands n/e 14.2 hands – eligibility (Must have entered in but not have won an open Show Hunter class today)		

# 24/7 Emergency Service

Contact us: **02 4448 6488**  
office@iecvet.com.au

90C Mullers Lane, Berry

Office Hours  
**Monday - Friday 8:30am - 5pm**

HEALTH CARE

DENTISTRY

TRAVEL FREE

REPRODUCTION

GASTRIC HEALTH

DIAGNOSTICS

IMMUNISATION

LAMENESS

RACETRACK

PRE PURCHASE

SURGERY

PATHOLOGY

Proudly sponsoring  
the Berry Show for 15 years

Power to you,  
Berry

solar

air con.

electrical

hot water

PROUD SPONSORS  
2026 Berry Show

HORSES - RING THREE – SATURDAY, STARTS 8.30am

Entry \$5 per class Ribbons and Prize Money - 1<sup>st</sup> \$10, 2<sup>nd</sup> \$5, sponsored by SHOREBREAK FINANCE  
All entries must be made on Global by Monday 26<sup>th</sup> January 2026, 9pm

LADY RIDER

- Class 3301 Lady Rider, 17 years and under 21 years  
Class 3302 Lady Rider, 21 years and under 40 years  
Class 3303 Lady Rider, 40 years and over

**CHAMPION LADY RIDER - \$50 JENNY SPINKS MEMORIAL Ribbon, donated by THE MCGOLDRICK FAMILY**  
**RESERVE CHAMPION LADY RIDER - \$20 + ribbon**

GENTLEMAN RIDER

- Class 3304 Gentleman Rider, 17 years and under 21 years  
Class 3305 Gentleman Rider, 21 years and under 40 years  
Class 3306 Gentleman Rider, 40 years and over

**SUPREME CHAMPION RIDER \$60 + ribbon (from Champ. Ladies, Champ. Gents + Champ Junior Boy + Girl Rider & Champ Senior Boy & Girl Rider Rings 1 & 2) JOHN GALBRAITH MEMORIAL, donated by THE GALBRAITH FAMILY**

**CHAMPION GENTLEMAN RIDER - \$20 + ribbon**  
**RESERVE CHAMPION GENTLEMAN RIDER - \$10 + ribbon**

OPEN HACKS Cannot compete in Show Hunter Classes

- Class 3307 Novice Hack over 15 hands  
Class 3308 Open Hack over 15 hands n/e 15.2 hands  
Class 3309 Open Hack over 15.2 hands n/e 16 hands  
Class 3310 Open Hack over 16 hands n/e 16.2 hands  
Class 3311 Open Hack over 16.2 hands  
Class 3312 Adult's Hack to be ridden by an adult rider (cannot compete in Child Class)  
Class 3313 Child's Hack to be ridden by rider under 17 yrs (cannot compete in Adult Class)  
Class 3314 Open Hack over 15 h n/e 16 hands – eligibility (must have entered in, but not won an open class today)  
Class 3315 Open Hack over 16 hands – eligibility (must have entered in, but not won an open class today)

**CHAMPION HACK over 16 hands \$20 + ribbon, prize donated by HORSELAND WOLLONGONG**  
**RESERVE CHAMPION HACK over 16 hands \$10 + ribbon**  
**CHAMPION HACK over 15 hands n/e 16 hands \$20 + ribbon, prize donated by HORSELAND WOLLONGONG**  
**RESERVE CHAMPION HACK over 15 hands n/e 16 hands \$10 + ribbon**  
**SUPREME CHAMPION HACK - \$60 + ribbon from rings 1, 2 & 3 Champs, all three Judges, SANDRA HENRY MEMORIAL, sponsored by THE POIDEVIN FAMILY**

SHOW HUNTER HACKS Cannot compete in Open Hack Classes

- Class 3316 Novice Show Hunter Hack over 15 hands  
Class 3317 Open Show Hunter Hack over 15 hands n/e 15.2 hands  
Class 3318 Open Show Hunter Hack over 15.2 hands n/e 16 hands  
Class 3319 Open Show Hunter Hack over 16 hands n/e 16.2 hands  
Class 3320 Open Show Hunter Hack over 16.2 hands  
Class 3321 Child's Show Hunter Hack to be ridden by rider under 17 (cannot compete in Adult Class)  
Class 3322 Adult's Show Hunter Hack to be ridden (cannot compete in Child Class)  
Class 3323 Open Show Hunter Hack over 15 hands n/e 16 hands – eligibility (must have entered in, but not won an open Show Hunter class today)  
Class 3324 Open Show Hunter Hack over 16 hands – eligibility (must have entered in, but not won an open Show Hunter class today)

**CHAMPION SHOW HUNTER HACK over 15 h n/e 16 hands \$20 + ribbon, prize donated by HORSELAND WOLLONGONG**  
**RESERVE CHAMPION SHOW HUNTER HACK over 15 h n/e 16 hands - \$10 + ribbon**  
**CHAMPION SHOW HUNTER HACK over 16 hands \$20 + ribbon, prize donated by HORSELAND WOLLONGONG**  
**RESERVE CHAMPION SHOW HUNTER HACK over 16 hands \$10 + ribbon**  
**SUPREME CHAMPION SHOW HUNTER \$60 WES MERLIN MEMORIAL Ribbon, sponsored by THE ORFORD FAMILY**  
To include Champ. Show Hunter Ponies, Champ. Show Hunter Galloways & Champ. Show Hunter HACKs.  
Class 3325 Best Fancy Dress Horse and Rider – Open



# Trusted Local Agency for over 30 Years

RayWhite

At Ray White Berry, we understand that your home is one of your most important assets, so our local property experts are here to help.  
Ray White Berry has proudly supported The Berry Show and our Local Community since 1992.



Shane Hilaire  
0401 691 790  
Selling Principal



Hayley Banks  
0400 260 831  
Sales Consultant



Sarah Tebbutt  
0401 691 793  
Sales Consultant



Madeleine Phillips  
Sales Associate to  
Shane Hilaire



Megan Mawer  
Sales Associate to  
Hayley Banks



Rebecca Pugh  
Property  
Manager



Mackenzie Shaw  
Property  
Manager



Cassandra Foreman  
Operations  
Manager



Lyndal Thomson  
Reception & Sales  
Administration



**RayWhite**  
BERRY

78 Queen Street, Berry  
Phone: (02) 4464 2399

HORSES - RING FOUR – SATURDAY, STARTS 8.30am

Entry \$5 per class-Prize money 1<sup>st</sup> \$10, 2<sup>nd</sup> \$5, sponsored by RAY WHITE BERRY  
Stallion riders/handlers must be 18 years plus.

All entries must be made on Global by Monday 26<sup>th</sup> January 2026, 9pm

AUSTRALIAN STOCK HORSE LED Must be registered

- Class 401

Yearling Colt
- Class 402

Colt 2 years
- Class 403

Colt 3 years
- Class 404

Stallion 4 years and over
- CHAMPION LED STALLION OR COLT AUSTRALIAN STOCK HORSE - \$20 + ribbon
- RESERVE CHAMPION LED STALLION OR COLT AUSTRALIAN STOCK HORSE - \$10 + ribbon
- Class 405

Yearling Filly
- Class 406

Filly 2 years
- Class 407

Filly 3 years
- Class 408

Mare 4 years and over, n/e 15 hands
- Class 409

Mare 4 years and over, over 15 hands n/e 15.2 hands
- Class 410

Mare 4 years and over, over 15.2 hands

CHAMPION LED MARE AUSTRALIAN STOCK HORSE \$20 + ribbon

RESERVE CHAMPION LED MARE AUSTRALIAN STOCK HORSE - \$10 + ribbon

Class 411

Yearling gelding

Class 412

Gelding 2 years

Class 413

Gelding 3 years

Class 414

Gelding 4 years and over, n/e 15 hands,

Class 415

Gelding 4 years and over, over 15 hands n/e 15.2 hands

Class 416

Gelding 4 years and over, over 15.2 hands

CHAMPION LED GELDING AUSTRALIAN STOCK HORSE \$20 + ribbon

RESERVE CHAMPION LED GELDING AUSTRALIAN STOCK HORSE - \$10 + ribbon

SUPREME CHAMPION LED AUSTRALIAN STOCK HORSE \$60 + ribbon

JUNIOR STOCKHORSE HANDLER

- Class 417 Handler under 13 years

Class 418 Handler 13 - 18 years

ASH HACK- Stockhorse or English Attire accepted

- Class 419

ASH Hack - 3 years and under
- Class 420

ASH Hack - Stallion 4 years and over
- Class 421

ASH Hack - Mare 4 years and over, n/e 15 hands
- Class 422

ASH Hack - Mare 4 years and over, over 15 n/e 15.2 hands
- Class 423

ASH Hack - Mare 4 years and over, over 15.2 hands
- Class 424

ASH Hack - Gelding 4 years and over, under 15 hands
- Class 425

ASH Hack - Gelding 4 years and over, over 15 hands n/e 15.2 hands
- Class 426

ASH Hack - Gelding 4 years and over, over 15.2 hands
- Class 427

ASH Hack - Curb Bit
- CHAMPION AUSTRALIAN STOCKHORSE HACK \$20 + ribbon

RESERVE CHAMPION AUSTRALIAN STOCKHORSE HACK \$10 + ribbon

WORKING STOCKHORSES

- Class 428

ASH Working - 3 years and under
- Class 429

ASH Working - Stallion 4 years and over
- Class 430

ASH Working - Mare 4 years and over, n/e 15 hands
- Class 431

ASH Working - Mare 4 years and over, over 15 hands n/e 15.2 hands
- Class 432

ASH Working - Mare 4 years and over, over 15.2 hands
- Class 433

ASH Working - Gelding 4 years and over, n/e 15 hands
- Class 434

ASH Working - Gelding 4 years and over, over 15 hands n/e 15.2 hands
- Class 435

ASH Working - Gelding 4 years and over, over 15.2 hands
- CHAMPION ASH WORKING STOCKHORSE - \$20 + ribbon

RESERVE CHAMPION ASH WORKING STOCKHORSE \$10 + ribbon

SUPREME CHAMPION RIDDEN AUSTRALIAN STOCKHORSE \$60 + ribbon

JUNIOR RIDDEN STOCK HORSES

- Class 436

ASH Hack - Ridden by rider under 13 years
- Class 437

ASH Hack - Ridden by rider 13-18 years
- Class 438

ASH Working - Ridden by rider under 13 years
- Class 439

ASH Working - Ridden by rider 13-18 years
- CHAMPION JUNIOR STOCKHORSE - \$20 + ribbon

RESERVE CHAMPION JUNIOR STOCKHORSE \$10 + ribbon

ANSA Must be registered - Run under ANSA rules, ridden classes snaffle bit only

- Class 440

Led ANSA Stallion or Colt
- Class 441

Led ANSA Mare or Filly, over 14hh n/e 15hh
- Class 442

Led ANSA Mare or Filly, over 15hh n/e 16hh
- Class 443

Led ANSA Mare or Filly, over 16hh
- Class 444

Led ANSA Gelding, over 14hh n/e 15hh
- Class 445

Led ANSA Gelding, over 15hh n/e 16hh
- Class 446

Led ANSA Gelding, over 16hh
- Class 447

Ridden ANSA Stallion
- Class 448

Ridden ANSA Mare, over 14hh n/e 15hh
- Class 449

Ridden ANSA Mare, over 15hh n/e 16hh
- Class 450

Ridden ANSA Mare, over 16hh
- Class 451

Ridden ANSA Gelding, over 14hh n/e 15hh
- Class 452

Ridden ANSA Gelding, over 15hh n/e 16hh
- Class 453

Ridden ANSA Gelding, over 16hh
- CHAMPION LED ANSA - \$20 + ribbon

RESERVE CHAMPION LED ANSA - \$10 + ribbon

CHAMPION RIDDEN ANSA - \$20 + ribbon

RESERVE CHAMPION RIDDEN ANSA - \$10 + ribbon

Horizon Bank



Look to Horizon for all your banking needs

Shop 3, 115 Queen St, Berry  
Enter via Broughton Court

4428 9750  
horizonbank.com.au

HONEY COASTAL COUNTRY



Embracing the sweetness of coastal country life

112 QUEEN ST, BERRY | 0480 67389  
HONEYCOASTALCOUNTRY.COM.AU

Berry

itsmyclub

BERRY CHINESE Restaurant

OPEN WEDNESDAY TO SUNDAY LUNCH & DINNER

CLUB RAFFLES

Thursday Night FISHING CLUB RAFFLE Drawn 7:15PM

Friday Night CLUB RAFFLE Drawn 7:00PM

Saturday Night CRICKET CLUB RAFFLE Drawn 7:00PM

Sunday CLUB RAFFLE Drawn 7:00PM

140 Princes HWY Berry

Phone : 44642995

Visit our FB page by scanning the QR code





DAIRY CATTLE - SECTION 4

BERRY SHOWGROUND P.I.C. NK464606

**CHIEF STEWARD:** Col Walsh  
**ANNOUNCER:** Paul Condon

**Entries close at 7pm Wednesday, 28<sup>th</sup> January 2026**  
**ALL EXHIBITORS & SUPPORTERS MUST PAY GATE ENTRY**  
**NO ENTRY FEE, ALL DAIRY CATTLE ENTRY FEES**  
**SPONSORED BY RAINE & HORNE BERRY**

THANKS TO OUR  
SPONSOR:  
RAINE & HORNE BERRY

Conditions

Berry Show encourages the move towards a disease free status for all exhibits. For 2026 the following conditions will apply: The Stewards will ensure:

- Tested negative animals will be housed separately from other animals. Every effort will be made to immediately remove faecal material to an isolated area. Separate fresh water facilities will be made available.
- EBL (Enzootic Bovine Leucosis)-Dairy Cattle are only accepted for exhibit if they originate from “EBL Monitored Free” herd. Certification to this effect must accompany entry form.

JOHNE'S DISEASE:

- The society will permit both tested and untested animals
- The current status of exhibitors' herds must be notified upon entry or prior to judging day.
- Declarations for all Johne's Disease tested cattle must be produced to the Chief Steward before unloading cattle on the day of the Show.

BIOSECURITY:

- As from August 2019 the Biosecurity Act has been amended. Livestock farmers need to demonstrate they observe Animal Welfare Standards & Guidelines - details at [www.mla.com.au/biosecurity](http://www.mla.com.au/biosecurity) (tools & resources).
- Cattle will not be able to access communal water troughs.
- Due to Biosecurity, competitors must supply, use and remove their own cattle's bedding. Waste disposal bin on site for used bedding and manure.

General Conditions for Dairy Cattle Section:

- All cattle must be unloaded and loaded at the four ramps in Albany Street.
- It is compulsory for herd book stock to enter accordingly to birth registration. Entries to be made on the prescribed form, available from the Secretary. The age of registered dairy cattle to be the actual age up to and inclusive of 1<sup>st</sup> January. No animal in the Cattle Section can compete in more than one Sub-Section. The owner of any animal so competing shall forfeit all prize moneys at Show.
- All animals must be under control, and all cattle must be led around the judging ring.
- All paraders are to wear breed dust coats or breed uniforms and enclosed shoes.
- No single exhibit will be entitled to more than one first prize, nor will it be allowed to compete, under penalty of disqualification, after winning a first prize, except in Champion, Special Classes, Groups or Pens.
- All exhibits, having won a prize, except in pens, must parade in the ring, as directed by the Stewards.
- Cattle shown in pens will be allowed to compete in single exhibits and vice-versa.
- Cow entered as dry will be allowed to compete as cow in milk (if calved). The definition of the word “heifer” is a female beast that has never had a calf, and that has no more than six permanent teeth. Exhibitors are to observe this condition when completing the entry form.
- Where animals are owned jointly or in syndicates, points for most successful exhibitor or breeder trophies to be awarded to the names jointly or the syndicate, not divided between the owners individually.

**All electrical leads and appliances are to be tagged and kept off the ground.**

**Cattle must be loaded by 3pm and shed left clean.**

**Cattle must use their own water container.**

**Breakfast, sponsored by GREENLAND MINE SERVICES and BBQ lunch sponsored by LACTALIS**

**HOW TO ENTER ONLINE:** Entries can be lodged online via Showday, you'll find a step-by-step guide on the website at [berryshow.org.au](http://berryshow.org.au).

**AT THE SHOW OFFICE:** Alternatively, if you are not using the online entry system, entry forms are available from the website ([berryshow.org.au](http://berryshow.org.au) > **Berry Show 2026 > Exhibiting & Competing**) and from the Show office on Tuesdays 10-4pm and starting from 19<sup>th</sup> January 2026 on weekdays, also 10-4pm.

Completed forms can be delivered in the following ways:

Handed in at the Show Office  
Emailed to: [entries@berryshow.org.au](mailto:entries@berryshow.org.au). - (\*Please note: photographs of completed entry forms will not be accepted, scanned copies only)  
or posted to PO Box 173, Berry NSW 2535.



HOLSTEIN - FRIDAY, STARTS 9.30am			
STEWARDS: Paul Condon, John Miller, Phil Duncan and Steven King			
TO BE CONDUCTED BY OFFICIAL H.F.A.A. RULES			
All exhibits must be officially registered with the Holstein Cattle Society of Australia and all cattle entered for competition will be inspected, if necessary, prior to judging by Inspectors of the Holstein Cattle Society of Australia and all registrations will be checked.			
Ribbons will be awarded for 1 <sup>st</sup> , 2 <sup>nd</sup> and 3 <sup>rd</sup> .			
Class 4019	Heifer, under 6 months, 1 <sup>st</sup> \$20, 2 <sup>nd</sup> \$10, 3 <sup>rd</sup> \$5 + ribbons, sponsored by BISHOPS SOUTH NOWRA	Class 4028	Cow, 4 to 5 years in milk, 1 <sup>st</sup> \$50, 2 <sup>nd</sup> \$10, 3 <sup>rd</sup> \$5 + ribbons, sponsored by SELECT GENETICS
Class 4020	Heifer, under 12 months, 1 <sup>st</sup> \$20, 2 <sup>nd</sup> \$10, 3 <sup>rd</sup> \$5 + ribbons, sponsored by RAINE & HORNE BERRY	Class 4029	Cow, 5 to 7 years in milk, 1 <sup>st</sup> \$50, 2 <sup>nd</sup> \$10, 3 <sup>rd</sup> \$5 + ribbons, sponsored by MANILDRA GROUP
Class 4021	Heifer, 12 months and under 18 months, 1 <sup>st</sup> \$20, 2 <sup>nd</sup> \$10, 3 <sup>rd</sup> \$5 + ribbons, sponsored by RAINE & HORNE BERRY	Class 4030	Cow, 7 years and over in milk, 1 <sup>st</sup> \$50, 2 <sup>nd</sup> \$10, 3 <sup>rd</sup> \$5 + ribbons, sponsored by RAINE & HORNE BERRY
Class 4022	Heifer, 18 months and under 2 years, 1 <sup>st</sup> \$20, 2 <sup>nd</sup> \$10, 3 <sup>rd</sup> \$5 + ribbons, sponsored by RAINE & HORNE BERRY	Class 4031	Pen of three females, over 2 years, 1 <sup>st</sup> \$50, 2 <sup>nd</sup> \$10, 3 <sup>rd</sup> \$5 + ribbons, sponsored by RAINE & HORNE BERRY
Class 4023	Pair of females, under 2 years, 1 <sup>st</sup> \$20, 2 <sup>nd</sup> \$10, 3 <sup>rd</sup> \$5 + ribbons, sponsored by RAINE & HORNE BERRY	Class 4032	Dam and daughter or two daughters progeny of 1 dam, 1 <sup>st</sup> \$20, 2 <sup>nd</sup> \$10, 3 <sup>rd</sup> \$5 + ribbons, sponsored by RAINE & HORNE BERRY
JUNIOR CHAMPION FEMALE HOLSTEIN, under 2 years \$100 + RAY & VAL ISON MEMORIAL, ribbon sponsored by THE ISON FAMILY		Class 4033	Best uddered cow, \$100, sponsored by MARGARET & COLIN SHARPE
RESERVE JUNIOR CHAMPION FEMALE HOLSTEIN, under 2 years - \$25 + RAY & VAL ISON MEMORIAL, ribbon sponsored by THE ISON FAMILY		CHAMPION FEMALE HOLSTEIN, OVER 3 YEARS \$200 + V.J. LAMOND MEMORIAL, ribbon sponsored by RAINE & HORNE BERRY	
Class 4024 Female, 2 to 3 years dry, 1 <sup>st</sup> \$50, 2 <sup>nd</sup> \$10, 3 <sup>rd</sup> \$5 + ribbons, sponsored by RAINE & HORNE BERRY		RESERVE CHAMPION FEMALE HOLSTEIN, over 3 years \$50 + ribbon, sponsored by RAINE & HORNE BERRY	
Class 4025	Cow, under 2 ½ years in milk, 1 <sup>st</sup> \$50, 2 <sup>nd</sup> \$10, 3 <sup>rd</sup> \$5 + ribbons, sponsored by RAINE & HORNE BERRY	Class 4034	Production Prize, Cow 4 years and over. To be eligible a cow must have won a ribbon in her respective breed class. The winner is then determined as the cow producing the most butterfat plus protein under official or group recording completed during the period 1 <sup>st</sup> January to 31 <sup>st</sup> December, 2025. Proof of production to be supplied to the Steward. 1 <sup>st</sup> \$20, 2 <sup>nd</sup> \$10, 3 <sup>rd</sup> \$5 + ribbons, sponsored by BISHOPS SOUTH NOWRA
Class 4026	Cow, 2 ½ to 3 years, in milk, 1 <sup>st</sup> \$50, 2 <sup>nd</sup> \$10, 3 <sup>rd</sup> \$5 + ribbons, sponsored by RAINE & HORNE BERRY	Class 4035	Production Prize, Cow under 4 years, Same conditions as in previous class, 1 <sup>st</sup> \$20, 2 <sup>nd</sup> \$10, 3 <sup>rd</sup> \$5 + ribbons, sponsored by BISHOPS SOUTH NOWRA
INTERMEDIATE CHAMPION FEMALE HOLSTEIN \$100 + ribbon, sponsored by RAINE & HORNE BERRY			
RESERVE INTERMEDIATE CHAMPION FEMALE HOLSTEIN \$20 + ribbon, sponsored by RAINE & HORNE BERRY			
Class 4027	Cow, 3 to 4 years in milk, 1 <sup>st</sup> \$50, 2 <sup>nd</sup> \$10, 3 <sup>rd</sup> \$5 + ribbons, sponsored by MARGARET & COLIN SHARPE		
JERSEY			

RESERVE INTERMEDIATE CHAMPION FEMALE JERSEY \$20 + ribbon, RAINE & HORNE BERRY	
Class 4044	Cow, 3 to 4 years in milk, 1 <sup>st</sup> \$50, 2 <sup>nd</sup> \$10, 3 <sup>rd</sup> \$5 + ribbons, sponsored by RAINE & HORNE BERRY
Class 4045	Cow, 4 to 5 years in milk, 1 <sup>st</sup> \$50, 2 <sup>nd</sup> \$10, 3 <sup>rd</sup> \$5 + ribbons, sponsored by RAINE & HORNE BERRY
Class 4046	Cow 5 to 7 years in milk, 1 <sup>st</sup> \$50, 2 <sup>nd</sup> \$10, 3 <sup>rd</sup> \$5 + ribbons, sponsored by MANILDRA GROUP
Class 4047	Cow 7 years and over in milk, 1 <sup>st</sup> \$50, 2 <sup>nd</sup> \$10, 3 <sup>rd</sup> \$5 + ribbons, sponsored by RAINE & HORNE BERRY
Class 4048	Pen of three females, over 2 years, 1 <sup>st</sup> \$50, 2 <sup>nd</sup> \$10, 3 <sup>rd</sup> \$5 + ribbons
Class 4049	Dam and Daughter or two daughters progeny of 1 dam, 1 <sup>st</sup> \$50, 2 <sup>nd</sup> \$10, 3 <sup>rd</sup> \$5 + ribbons
Class 4050	Best uddered cow, 1 <sup>st</sup> \$60, sponsored by RAINE & HORNE BERRY

COLOURED OR ANY OTHER BREED	
STEWARD: Paul Timbs	
All exhibits must be officially registered with the respective Societies.	
Ribbons will be awarded for 1 <sup>st</sup> , 2 <sup>nd</sup> and 3 <sup>rd</sup> .	

Class 4053	Heifer, under 6 months, 1 <sup>st</sup> \$20, 2 <sup>nd</sup> \$10, 3 <sup>rd</sup> \$5 + ribbons, sponsored by BISHOPS SOUTH NOWRA
Class 4054	Heifer, under 12 months, 1 <sup>st</sup> \$20, 2 <sup>nd</sup> \$10, 3 <sup>rd</sup> \$5 + ribbons
Class 4055	Heifer, 12 months and under 18 months, 1 <sup>st</sup> \$20, 2 <sup>nd</sup> \$10, 3 <sup>rd</sup> \$5 + ribbons
Class 4056	Heifer, 18 months and under 2 years, 1 <sup>st</sup> \$20, 2 <sup>nd</sup> \$10, 3 <sup>rd</sup> \$5 + ribbons
Class 4057	Pair of females, under 2 years, 1 <sup>st</sup> \$20, 2 <sup>nd</sup> \$10, 3 <sup>rd</sup> \$5 + ribbons, sponsored by BERRY SMASH REPAIRS

JUNIOR CHAMPION FEMALE ANY OTHER BREED, under 2 years - \$50 + ribbon	
RESERVE JUNIOR CHAMPION FEMALE ANY OTHER BREED, under 2 years - \$25 + ribbon	
JUNIOR CHAMPION FEMALE ILLAWARRA, under 2 years \$50 + ribbon, sponsored by RAINE & HORNE BERRY	
RESERVE JUNIOR CHAMPION FEMALE ILLAWARRA, under 2 years - \$20 + ribbon, sponsored by RAINE & HORNE BERRY	
Class 4058	Female, 2 to 3 years dry, 1 <sup>st</sup> \$20, 2 <sup>nd</sup> \$10, 3 <sup>rd</sup> \$5 + ribbons
Class 4059	Cow, under 2 ½ years in milk, 1 <sup>st</sup> \$25, 2 <sup>nd</sup> \$10, 3 <sup>rd</sup> \$5 + ribbons
Class 4060	Cow, 2 ½ to 3 years in milk, 1 <sup>st</sup> \$25, 2 <sup>nd</sup> \$10, 3 <sup>rd</sup> \$5 + ribbons, sponsored by BERRY SMASH REPAIRS

INTERMEDIATE CHAMPION FEMALE ANY OTHER BREED \$75 + ribbon	
RESERVE INTERMEDIATE CHAMPION FEMALE COLOURED OR ANY OTHER BREED - \$20 + ribbon	
INTERMEDIATE CHAMPION FEMALE ILLAWARRA \$75 + ribbon, sponsored by RAINE & HORNE BERRY	
RESERVE INTERMEDATE CHAMPION FEMALE ILLAWARRA \$20 + ribbon	
Class 4061	Cow, 3 to 4 years in milk, 1 <sup>st</sup> \$50, 2 <sup>nd</sup> \$10, 3 <sup>rd</sup> \$5 + ribbons, sponsored by MANILDRA GROUP

CHAMPION FEMALE JERSEY, over 3 years \$200 + ribbon, sponsored by RAINE & HORNE BERRY	
RESERVE CHAMPION FEMALE JERSEY, over 3 years \$50 + ribbon, sponsored by RAINE & HORNE BERRY	
Class 4051	Production Prize, Cow 4 years and over. To be eligible a cow must have won a ribbon in her respective breed class. The winner is then determined as the cow producing the most butterfat plus protein under official or group recording completed during the period 1 <sup>st</sup> January to 31 <sup>st</sup> December, 2025. Proof of production to be supplied to the Steward. 1 <sup>st</sup> \$20, 2 <sup>nd</sup> \$10, 3 <sup>rd</sup> \$5 + ribbons
Class 4052	Production Prize, Cow under 4 years, Same conditions as in previous class 1 <sup>st</sup> \$20, 2 <sup>nd</sup> \$10, 3 <sup>rd</sup> \$5 + ribbons, sponsored by RAINE & HORNE BERRY

Class 4062	Cow, 4 to 5 years in milk, 1 <sup>st</sup> \$50, 2 <sup>nd</sup> \$10, 3 <sup>rd</sup> \$5 + ribbons, sponsored by MARGARET & COLIN SHARPE
Class 4063	Cow, 5 years and over in milk, 1 <sup>st</sup> \$50, 2 <sup>nd</sup> \$10, 3 <sup>rd</sup> \$5 + ribbons, sponsored by J.T.ALEXANDER MEMORIAL
Class 4064	Pen of three females, over 2 years, 1 <sup>st</sup> \$20, 2 <sup>nd</sup> \$10, 3 <sup>rd</sup> \$5 + ribbons, sponsored by BERRY SMASH REPAIRS
Class 4065	Best Uddered cow, \$60, sponsored by RAINE & HORNE BERRY
Class 4066	Best Uddered Illawarra cow H.G.MILLER MEMORIAL
Class 4067	Production Prize, cow under 4 years. To be eligible a cow must have won a ribbon in her respective breed class. The winner is then determined as the cow producing the most butterfat plus protein under official or group recording completed during the period 1 <sup>st</sup> January to 31 <sup>st</sup> December, 2025. Proof of production to be supplied to the Steward. 1 <sup>st</sup> \$20, 2 <sup>nd</sup> \$10, 3 <sup>rd</sup> \$5 + ribbons, sponsored by RAINE & HORNE BERRY

Individual breed champions from the Coloured or Any Other Breed section will be chosen to enter the Interbreed section.	
Categories will be- JUNIOR CHAMPION INTERMEDIATE CHAMPION SENIOR CHAMPION BEST UDDER PEN OF 3 FEMALES OVER 2 YEARS	
CHAMPION FEMALE ILLAWARRA, over 3 years \$200 + ribbon, sponsored by RAINE & HORNE BERRY	
RESERVE CHAMPION FEMALE ILLAWARRA, over 3 years \$50 + ribbon	
CHAMPION FEMALE ANY OTHER BREED, over 3 years \$200 + ribbon, sponsored by RAINE & HORNE BERRY	
RESERVE CHAMPION FEMALE ANY OTHER BREED, over 3 years - \$25 + ribbon, sponsored by RAINE & HORNE BERRY	

**DAIRY YOUTH GROUP - FRIDAY,  
STARTS 8.30am**All Youth Group Classes, **sponsored by COL & SUE WALSH**

- Class 4068 Junior Parader, under 10 years, (under 10 years on the day. To be judged on the ability to handle their animal and general presentation)  
1<sup>st</sup> \$20, 2<sup>nd</sup> \$10, 3<sup>rd</sup> \$5, 4<sup>th</sup> \$5, 5<sup>th</sup> \$5, 6<sup>th</sup> \$5, 7<sup>th</sup> \$5, 8<sup>th</sup> \$5, 9<sup>th</sup> \$5, 10<sup>th</sup> \$5
- Class 4069 Junior Parader, 10 years and under 13 years,  
1<sup>st</sup> \$20, 2<sup>nd</sup> \$10, 3<sup>rd</sup> \$5, 4<sup>th</sup> \$5, 5<sup>th</sup> \$5, 6<sup>th</sup> \$5, 7<sup>th</sup> \$5, 8<sup>th</sup> \$5, 9<sup>th</sup> \$5, 10<sup>th</sup> \$5
- Class 4070 Junior Parader, 13 years and under 20 years,  
1<sup>st</sup> \$20, 2<sup>nd</sup> \$10, 3<sup>rd</sup> \$5, 4<sup>th</sup> \$5, 5<sup>th</sup> \$5

**CHAMPION JUNIOR PARADER**  
**\$100, sponsored by COL & SUE WALSH**  
**RESERVE CHAMPION JUNIOR PARADER**  
**\$50, sponsored by COL & SUE WALSH**

**INTERBREED**

**SUPREME JUNIOR CHAMPION**  
**\$100 (ALL BREEDS), sponsored by JIM HINDMARSH & SON,**  
**\$200 sponsored by THE McINTOSH FAMILY**

**CHAMPION PRODUCTION COW**  
**\$100 (ALL BREEDS), sponsored by BERRY RURAL STORE**  
**Prize Open Order Voucher to value of \$100 plus**  
**CHAMPION RIBBON (MUST HAVE WON A RIBBON IN HER RESPECTIVE CLASSES)**

**SUPREME INTERMEDIATE CHAMPION**  
**\$100 (ALL BREEDS), sponsored by McGOLDRICK ESTATE AGENTS, \$300 sponsored by THE McINTOSH FAMILY**

**BEST UDDERED COW**  
**\$100 (ALL BREEDS) Prize +**  
**THE HEDLEY JOHNSON MEMORIAL, sash sponsored by COLIN & MARGARET SHARPE**

**BEST PEN OF THREE OVER TWO YEARS (ALL BREEDS)**  
**\$350 (First prize breed winners eligible)**  
**DR. GEORGE BORYS, D.V.M. HANNOVER MEMORIAL, sash + \$350, sponsored by THE BORYS FAMILY**

**SUPREME CHAMPION COW, ALL BREEDS**  
**\$1,400 F. A. McINTOSH MEMORIAL, \$500**  
**sponsored by THE McINTOSH FAMILY,**  
**sponsored by McGOLDRICK ESTATE AGENTS**

**BERRY RURAL STORE**Extensive range of **HARDWARE** available nowYour one stop shop for all rural,  
farm, garden, pet & stockfeed needs**Berry Rural Store***Best quality products at competitive prices.*

Lot 4, Old Creamery Lane  
 Berry, NSW 2535  
 T: 4464 1006



## RURAL AMBASSADOR PROGRAM

Albion Park, Kiama, Berry, Robertson, Milton

Rural Ambassador - Ages 18-30 years  
 Young Rural Ambassador - Ages 14-18 years

**NEW FOR BERRY SHOW** ARE YOU INTERESTED?  
 FIND OUT MORE  
 TAG.SOUTHCOST@GMAIL.COM

The program offers young individuals the chance to gain knowledge in the agriculture show movement through participation as a steward at local shows.

- Get behind the scenes and help run events at of your local show
- Be appointed a show mentor to guide and support you
- Be exposed to each show section, interact with livestock and exhibitors and hand out ribbons and prizes
- Participate in the Young Farmers Challenge
- Meet like-minded people enthusiastic about everything agriculture

You will receive:

- A show ambassador shirt
- 2 years membership to the participating show society
- 2 years membership with TAG
- 12 months Honorary Show Society Committee position
- And share in \$200 cash prize money and prizes!

**KEEP AN EYE ON THE BERRY SHOW SOCIAL MEDIA CHANNELS FOR UPDATES THROUGHOUT THE SHOW YEAR**

Proudly sponsored by BlueScope Win Community Partnership and supported by The Agriculture Group (TAG).

**BEEF CATTLE - SECTION 5**

BERRY SHOWGROUND P.I.C. NK464606

**CHIEF STEWARDS:** Jessica O'Connell and Daren Turner**STEWARDS:** Brian Bowley, Ben Ellis and Bonnie Cox**ANNOUNCER:** Paul Condon**Entries close** at 5pm Wednesday, 28<sup>th</sup> January 2026**ALL EXHIBITORS & SUPPORTERS MUST PAY GATE ENTRY****NO ENTRY FEE ALL BEEF CATTLE ENTRY FEES SPONSORED BY MCGOLDRICK ESTATE AGENTS BERRY****Conditions**

Berry Show encourages the move towards a disease-free status for all exhibits. For 2026 the following conditions will apply: The Stewards will ensure:

- Tested negative animals will be housed separately from other animals.
- Every effort will be made to immediately remove faecal material to an isolated area.
- Separate fresh water facilities will be made available

**JOHNE'S DISEASE:**

- The society will permit both tested and untested animals
- The current status of exhibitors' herds must be notified upon entry or prior to judging day.
- Declarations for all Johne's Disease tested cattle must be produced to the Chief Steward before unloading cattle on Show day.

**BIOSECURITY:**

- As from August 2019 the Biosecurity Act has been amended. Livestock farmers need to demonstrate they observe Animal Welfare Standards & Guidelines - details at [www.mla.com.au/biosecurity](http://www.mla.com.au/biosecurity) (tools & resources).
- Cattle will not be able to access communal water troughs.
- Due to Biosecurity, competitors must supply, use and remove their own cattle's bedding. Waste disposal bin on site.

**All electrical leads and appliances are to be tagged and kept off the ground.****Cattle must be loaded by 3pm and shed left clean.****Cattle must use their own water container.****Sausage sizzle breakfast available to all exhibitors before judging, sponsored by JIM HINDMARSH & SON.**

**HOW TO ENTER ONLINE:** Entries can be lodged online via Showday, you'll find a step-by-step guide on the website at [berryshow.org.au](http://berryshow.org.au).

**AT THE SHOW OFFICE:** Alternatively, if you are not using the online entry system, entry forms are available from the website ([berryshow.org.au](http://berryshow.org.au) > **Berry Show 2026 > Exhibiting & Competing**) and from the Show office on Tuesdays 10-4pm and starting from 19<sup>th</sup> January 2026 on weekdays, also 10-4pm.

**Completed forms can be delivered in the following ways:**

Handed in at the Show Office

Emailed to: [entries@berryshow.org.au](mailto:entries@berryshow.org.au). - (\*Please note: photographs of completed entry forms will not be accepted, scanned copies only)

or posted to PO Box 173, Berry NSW 2535.





## ANGORA GOATS - SECTION 6

BERRY SHOWGROUND P.I.C. NK464606

**CHIEF STEWARD:** Ken Mitchell

**STEWARD:** Theresa Mitchell

**Entries Close** 5pm, Tuesday, 27<sup>th</sup> January 2026

\$5 entry fee per class.

No late entries will be accepted.

Prizes: 1<sup>st</sup> \$15, 2<sup>nd</sup> \$12, 3<sup>rd</sup> \$10

**Goats to be on ground by 8.30am**

**Judging starts at 9am Saturday 31<sup>st</sup> January 2026**

**ALL EXHIBITORS & SUPPORTERS MUST PAY GATE ENTRY**

THANKS TO OUR  
SPONSOR:  
BERRY BOER

### LEGAL REQUIREMENTS

The requirements listed below are regulations set down by governing bodies in NSW. Forms marked (PWE) have been provided to each exhibitor with the official show entry form.

- All exhibits must provide a National Goat Health Statement (PWE).
- Goat Show and Sale Declaration (PWE).
- All exhibitors must provide a National Vendors Declaration OR Transport Stock Statement.
- All goats must carry a NLIS tag.

### ENTRY CONDITIONS

#### ALL GOAT CLASSES (GENERAL CONDITIONS)

- All animals must be free of external parasites.
- All animals must be owned by the exhibitor.
- Classes with only one entry may have the entry moved to an adjoining class (where appropriate).
- Goats may be moved to another class at the discretion of the judge.
- All stud animals over 12 months of age must be registered.
- All stud animals must have a clear and legible identification.
- Age is calculated at the date of the Show on a month-to-month basis.
- The wearing of white coats will be at the discretion of the Judge.
- All exhibitors must remain seated unless otherwise instructed by the Judge.
- Exhibitors must not talk to the Judge during judging unless instructed by the Judge.
- Points awarded towards Angora of the Year.



**HOW TO ENTER ONLINE:** Entries can be lodged online via Showday, you'll find a step-by-step guide on the website at [berryshow.org.au](http://berryshow.org.au).

**AT THE SHOW OFFICE:** Alternatively, if you are not using the online entry system, entry forms are available from the website ([berryshow.org.au](http://berryshow.org.au) > **Berry Show 2026 > Exhibiting & Competing**) and from the Show office on Tuesdays 10-4pm and starting from 19<sup>th</sup> January 2026 on weekdays, also 10-4pm.

#### Completed forms can be delivered in the following ways:

Handed in at the Show Office

Emailed to: [entries@berryshow.org.au](mailto:entries@berryshow.org.au). - (\*Please note: photographs of completed entry forms will not be accepted, scanned copies only)

or posted to PO Box 173, Berry NSW 2535.

### FLEECE CLASSES

- Class 6001 Fine hair (adult buck)
- Class 6002 Fine hair (adult doe)
- Class 6003 Young Goat
- Class 6004 Kid
- Class 6005 Fine Kid

#### CHAMPION FLEECE

**\$40 + ribbon,**  
**sponsored by BERRY BOER**

#### RESERVE CHAMPION FLEECE

**\$20 + ribbon,**  
**sponsored by BERRY BOER**



**EVERYTHING  
SOLAR &  
GUTTERS**

**GUTTERKNIGHT**  
GUTTER PROTECTION DAY AND NIGHT

- ✓ Local Berry Business
- ✓ Ember Guard
- ✓ Gutter Guard
- ✓ Gutter Cleaning
- ✓ Solar Panel Guard
- ✓ Solar Panel Cleaning

**CONTACT KEITH**  
0481 745 958

**20 YEARS  
WARRANTY**

**Construction Underway**

**BERRY LANE**

*A Rare Opportunity*

**Spacious Lots**  
580m<sup>2</sup> average size, perfect for your dream home

**Efficient Building**  
Level sites for a smooth construction process

**Tailored Options**  
Build your vision or collaborate with our award winning partners

**Future Ready**  
Start building in 2026

**Brand New Home & Land Packages**  
**Now Selling from \$1.24m**

**1300 93 44 55 | [berrylaneland.com.au](http://berrylaneland.com.au)**

**NEW HORIZON PROPERTIES** **WOODHILL PROPERTY**

# KEVIN ORFORD RURAL CONTRACTING

FOR ALL YOUR FARMING NEEDS

0418 639 802



DOE CLASSES

- Class 6006 Doe under 6 months
- Class 6007 Doe 6 months and under 12 months
- Class 6008 Doe 12 months and under 24 months
- Class 6009 Doe 24 months and under 36 months
- Class 6010 Doe 36 months and over

**CHAMPION SENIOR ANGORA DOE**  
**\$40 (CLASSES 6008 - 6010)**  
**ribbon, sponsored by BERRY BOER**  
**RESERVE CHAMPION SENIOR ANGORA DOE**  
**- \$20 + ribbon, sponsored by BERRY BOER**

BUCK CLASSES

- Class 6011 Buck under 6 months
- Class 6012 Buck 6 months and under 12 months
- JUNIOR CHAMPION ANGORA - \$40**  
**(CLASSES 6006, 6007, 6011 & 6012)**  
**ribbon, sponsored by BERRY BOER**
- RESERVE JUNIOR CHAMPION ANGORA**  
**- \$20 + ribbon, sponsored by BERRY BOER**
- Class 6013 Buck 12 months and under 24 months
- Class 6014 Buck 24 months and under 36 months
- Class 6015 Buck 36 months and over

**CHAMPION SENIOR ANGORA BUCK**  
**\$40 (CLASSES 6013 - 6015) + ribbon,**  
**sponsored by BERRY BOER**  
**RESERVE SENIOR CHAMPION ANGORA BUCK**  
**- \$20 + ribbon, sponsored by BERRY BOER**

FLEECE CLASSES

- Class 6017 Doe 24 months and over
- Class 6018 Buck 12 - 24 months
- Class 6019 Buck 24 months and over

SPECIALITY CLASSES

- Class 6020 Dam and progeny (progeny under 12 months)
- Class 6021 Sires progeny under 12 months (2 goats under 12 months, same sire, different dams)
- Class 6022 Sires progeny over 12 months (2 goats over 12 months, same sire, different dams)

**SUPREME CHAMPION ANGORA - \$50 (IN ALL 3 CHAMPION GOATS) + ribbon, sponsored by BERRY BOER**




**BMA**  
*Barrett Mobile*  
**AUTOMOTIVE**  
*phone 0404 119 226*

**CONTACT WAYNE BARRETT  
FOR PROMPT, EXPERT  
AUTO MECHANIC SERVICES  
IN BERRY AND  
SURROUNDING AREAS**

*We come to you*  
**NO NEED TO DROP OFF  
OR COLLECT YOUR VEHICLE**

**info@bmaberry.com.au**  
*phone 0404 119 226*

ABN 925 582 96135      MVRL50024



**You're looking at one of our projects**

We are proud to have worked with the Berry Show to create this program, the website and marketing materials.

From book design and photography to signage and websites - we bring brands to life.

Call us to find out what we can create for you...

*webDesign*  
SOLUTIONS NSW  
WEBDESIGNNSW.COM.AU | 0488 667707

# The Arbour Berry



**RETIREMENT LIVING AT ITS FINEST**

**www.thearbourberry.com.au      1300 727 034**



*Berry*  
**Donut Van**

**FRESH HOT DONUTS**  
**HOT PIES**  
**SAUSAGE ROLLS**  
**HOT & COLD DRINKS**  
**MILK SHAKES**

QUEEN STREET, BERRY

## POULTRY - SECTION 8

**CHIEF STEWARD:** Bob Folkard

**STEWARDS:** Deb Folkard, Kevyn Davis, Jessica Bonnitcha, Melissa Bonnitcha, Christine Talbot, Laurie Talbot, Melanie Wiffen

**Entries Close 5pm Tuesday 27<sup>th</sup> January 2026.** Late entries not accepted.

Judging starts at 8.30am Saturday 31<sup>st</sup> January 2026

Penning Saturday from 7am

First 228 Birds entered will be accepted **NB Limit of two entries per class per exhibitor unless the birds are different breeds (in the A.O.B classes) or different colours/varieties. In these cases, no more than two birds of each breed or colour/variety may be entered.**

All poultry to enter via Station Road Gate.

**Class Prizes** will be awarded as follows: Classes 8001-8123 1<sup>st</sup> \$10 and 2<sup>nd</sup> \$5, Classes 8124-8140 1<sup>st</sup> \$5 and 2<sup>nd</sup> \$3

Prize Presentation at 3.30pm

**ALL EXHIBITORS & SUPPORTERS MUST PAY GATE ENTRY**

**NO ENTRY FEE - ALL POULTRY CLASSES SPONSORED BY BERRY GETAWAYS**

THANKS TO OUR SPONSOR: BERRY GETAWAYS

Conditions

- Leg bands and rings to be removed before the bird is penned.
- All exhibits must be in the hands of the Stewards by 8.30am on Saturday and may be removed after 4.00pm on that day. Stewards may decide to release birds earlier if birds show heat stress.
- Junior exhibitors must be under 16 years of age and pen their own birds.
- In Any Other Breed classes (A.O.B.) the breed should be stated on the entry form so that, if FOUR or more birds are entered by at least TWO exhibitors, a class can be made for that breed prior to judging if not in the schedule. This can not be done on the day.
- Any bird showing illness or parasite (such as lice or scaly leg mite) will be removed from the pavilion.
- No birds are to be removed from cages except by judge or steward until unpenning time.
- No one is to interfere with, or talk to, the judge while judging is in progress.

SOFT FEATHER LARGE

- Class 8001 Ancona Male

Class 8002 Ancona Female

Class 8003 Araucana Male

Class 8004 Araucana Female

Class 8005 Australorp Male

Class 8006 Australorp Female

Class 8007 Barnevelder Male

Class 8008 Barnevelder Female

Class 8009 Brahma Male

Class 8010 Brahma Female

Class 8011 Cochin Male

Class 8012 Cochin Female

Class 8013 Hamburgh Male

Class 8014 Hamburgh Female

Class 8015 Langshan Male

Class 8016 Langshan Female

Class 8017 Leghorn Male

Class 8018 Leghorn Female

Class 8019 Marans Male

Class 8020 Marans Female

Class 8021 Orpington Male

Class 8022 Orpington Female

Class 8023 Phoenix Male

Class 8024 Phoenix Female

Class 8025 Plymouth Rock Male

- Class 8026 Plymouth Rock Female

Class 8027 Rhode Island Male

Class 8028 Rhode Island Female

Class 8029 Silkie Male

Class 8030 Silkie Female

Class 8031 Sussex Male

Class 8032 Sussex Female

Class 8033 Welsummer Male

Class 8034 Welsummer Female

Class 8035 Wyandotte Male

Class 8036 Wyandotte Female

Class 8037 A.O.B. Male

Class 8038 A.O.B. Female

Class 8039 Pair Soft Feather Large (1 Male & 1 Female)

**CHAMPION SOFT FEATHER LARGE**  
**\$25, sponsored by BERRY GETAWAYS**  
**+\$25 voucher, sponsored by BERRY RURAL STORE**  
**+ ribbon**

**RESERVE CHAMPION SOFT FEATHER LARGE**  
**\$15, sponsored by BERRY GETAWAYS**  
**+ bag of feed, sponsored by BERRY RURAL STORE**  
**+ ribbon**

## HARD FEATHER LARGE

Class 8040 Australian Game Male

Class 8041 Australian Game Female

Class 8042 Indian Game Male

Class 8043 Indian Game Female

Class 8044 Pit Game Male

Class 8045 Pit Game Female

Class 8046 OEG Male

Class 8047 OEG Female

Class 8048 A.O.B. Male

Class 8049 A.O.B. Female

Class 8050 Pair Hard Feather Large (1 Male & 1 Female)

**CHAMPION HARD FEATHER LARGE**  
**\$25, sponsored by BERRY GETAWAYS**  
**+ \$25 voucher, sponsored by BERRY RURAL STORE**  
**+ ribbon**

**RESERVE CHAMPION HARD FEATHER LARGE**  
**\$15, sponsored by BERRY GETAWAYS**  
**+ bag of feed, sponsored by BERRY RURAL STORE**  
**+ ribbon**

**CHAMPION LARGE OVERALL**  
**\$30, sponsored by BERRY GETAWAYS + \$10 voucher + bag of feed, sponsored by BERRY RURAL STORE**  
**+ ribbon**

## SOFT FEATHER BANTAM

Class 8051 Ancona Male

Class 8052 Ancona Female

Class 8053 Araucana Male

Class 8054 Araucana Female

Class 8055 Australorp Male

Class 8056 Australorp Female

Class 8057 Belgian Male

Class 8058 Belgian Female

Class 8059 Frizzle Male

Class 8060 Frizzle Female

Class 8061 Langshan Male

Class 8062 Langshan Female

Class 8063 Leghorn Male

Class 8064 Leghorn Female

Class 8065 Orpington Male

Class 8066 Orpington Female

Class 8067 Pekin Male

Class 8068 Pekin Female

Class 8069 Phoenix Male

Class 8070 Phoenix Female

Class 8071 Rhode Island Male

Class 8072 Rhode Island Female

Class 8073 Rosecomb Male

Class 8074 Rosecomb Female

Class 8075 Sebright Male

Class 8076 Sebright Female

Class 8077 Silkie Male

Class 8078 Silkie Female

Class 8079 Sussex Male

Class 8080 Sussex Female

Class 8081 Wyandotte Male

Class 8082 Wyandotte Female

Class 8083 A.O.B. Male

Class 8084 A.O.B. Female

Class 8085 Pair Soft Feather Bantam (1 Male & 1 Female)

**CHAMPION SOFT FEATHER BANTAM**  
**\$25, sponsored by BERRY GETAWAYS**  
**+ \$25 voucher, sponsored by BERRY RURAL STORE**  
**+ ribbon**

**RESERVE CHAMPION SOFT FEATHER BANTAM**  
**\$15, sponsored by BERRY GETAWAYS + bag of feed, sponsored by BERRY RURAL STORE + ribbon**

## HARD FEATHER BANTAM

Class 8086 Australian Game Male

Class 8087 Australian Game Female

Class 8088 Indian Game Male

Class 8089 Indian Game Female

Class 8090 OEG Male

Class 8091 OEG Female

Class 8092 Modern Male

Class 8093 Modern Female

Class 8094 Pit Game Male

Class 8095 Pit Game Female

Class 8096 A.O.B. Male

Class 8097 A.O.B. Female

Class 8098 Pair Hard Feather Bantam (1 Male & 1 Female)

**CHAMPION HARD FEATHER BANTAM**  
**\$25, sponsored by BERRY GETAWAYS**  
**+ \$25 voucher, sponsored by BERRY RURAL STORE**  
**+ ribbon**

**RESERVE CHAMPION HARD FEATHER BANTAM**  
**\$15, sponsored by BERRY GETAWAYS**  
**+ bag of feed, sponsored by BERRY RURAL STORE**  
**+ ribbon**

**CHAMPION BANTAM OVERALL**  
**\$30, sponsored by BERRY GETAWAYS**  
**+ \$10 Voucher + bag of feed, sponsored by BERRY RURAL STORE + ribbon**

36

BERRY SHOW - FRIDAY 30 & SATURDAY 31 JANUARY 2026

BERRY SHOW - FRIDAY 30 & SATURDAY 31 JANUARY 2026

37

WATERFOWL

Class 8099	Call Drake	Class 8115	Runner Drake
Class 8100	Call Duck	Class 8116	Runner Duck
Class 8101	Campbell Drake	Class 8117	A.O.B. Drake
Class 8102	Campbell Duck	Class 8118	A.O.B. Duck
Class 8103	Elizabeth Drake	Class 8119	Gander Any Breed, Entrants must provide a suitable cage to show birds
Class 8104	Elizabeth Duck		
Class 8105	Khaki Campbell Drake	Class 8120	Goose Any Breed, Entrant must provide a suitable cage to show birds
Class 8106	Khaki Campbell Duck	Class 8121	Waterfowl Pair (1 Male & 1 Female)
Class 8107	Mallard Drake		
Class 8108	Mallard Duck		
Class 8109	Muscovy Drake		
Class 8110	Muscovy Duck		
Class 8111	Orpington Drake		
Class 8112	Orpington Duck		
Class 8113	Pekin Drake		
Class 8114	Pekin Duck		

**CHAMPION WATERFOWL**  
**\$25 sponsored by BERRY GETAWAYS**  
**+ \$25 voucher, sponsored by BERRY RURAL STORE**  
**+ ribbon**

**RESERVE CHAMPION WATERFOWL**  
**\$15, sponsored by BERRY GETAWAYS**  
**+ bag of feed, sponsored by BERRY RURAL STORE**  
**+ ribbon**

TURKEY

Class 8122	Turkey Gobbler, Entrant must provide a suitable cage to show birds	Class 8123	Turkey Hen, Entrant must provide a suitable cage to show birds
------------	--	------------	--

JUNIOR CLASSES – under 16years

Class 8124 J	Soft Feather Large Male		
Class 8125 J	Soft Feather Large Female		
Class 8126 J	Soft Feather Bantam Male		
Class 8127 J	Soft Feather Bantam Female		
Class 8128 J	Hard Feather Large Male		
Class 8129 J	Hard Feather Large Female		
Class 8130 J	Hard Feather Bantam Male		
Class 8131 J	Hard Feather Bantam Female		
Class 8132 J	Drake (any breed)		
Class 8133 J	Duck (any breed)		

**CHAMPION JUNIOR LARGE**  
**\$10, sponsored by BERRY GETAWAYS**  
**+ \$10 voucher**  
**+ bag of feed, sponsored by BERRY RURAL STORE**  
**+ ribbon**

**CHAMPION JUNIOR BANTAM**  
**\$10, sponsored by BERRY GETAWAYS**  
**+ \$10 voucher**  
**+ Bag of feed sponsored by BERRY RURAL STORE**  
**+ ribbon**

JUNIOR CRAFT CLASSES – under 16years **NEW FOR 2026**

NEW JUNIOR CRAFT CLASSES

Class 8134	Decorated egg	Class 8136	Egg decorated to be an animal or bird
Class 8135	Egg decorated to be a person or character		

BACKYARD BIRDS - OPEN AGE EXHIBITORS

Class 8137	Best Bantam	Class 8139	Best Waterfowl
Class 8138	Best Large Fowl	Class 8140	Best Presented Bird

CHAMPION PAIR

<b>CHAMPION BANTAM PAIR</b> <b>\$30, sponsored by BERRY GETAWAYS</b> <b>+ \$10 voucher, sponsored by BERRY RURAL STORE</b> <b>+ ribbon</b>	<b>CHAMPION LARGE PAIR</b> <b>\$30 sponsored by BERRY GETAWAYS</b> <b>+ \$10 voucher, sponsored by BERRY RURAL STORE</b> <b>+ ribbon</b>
---	---

RARE BREED AWARD

All Rare Breeds and Rare Varieties as stipulated by the Rare Poultry Breeders Association (rarepoultrybreedersassociation.com/breed-basics.html) will be eligible for consideration for the Champion and Reserve Champion Rare Breeds Awards.	<b>CHAMPION RARE BREED</b> <b>\$50, sponsored by BERRY GETAWAYS</b> <b>+ one year's membership, sponsored by RARE POULTRY BREEDERS ASSOCIATION</b> <b>+ ribbon</b>
	<b>RESERVE CHAMPION RARE BREED</b> <b>\$25, sponsored by BERRY GETAWAYS</b> <b>+ ribbon, sponsored by RARE POULTRY BREEDERS ASSOCIATION</b>

BIRD OF SHOW

<b>CHAMPION BIRD OF SHOW</b> <b>\$50 sponsored by BERRY GETAWAYS</b> <b>+ \$50 voucher, sponsored by BERRY RURAL STORE</b> <b>+ ribbon</b>	<b>RESERVE CHAMPION BIRD OF SHOW</b> <b>\$30 sponsored by BERRY GETAWAYS</b> <b>+ \$10 voucher</b> <b>+ bag of feed, sponsored by BERRY RURAL STORE + ribbon</b>
---	---

BERRY GETAWAYS  
*whatever your heart desires*



Berry's largest selection of  
short stay holiday properties



(02) 4464 1793

www.berrygetaways.com.au



# Bond Lifestyle

PROPERTIES

