

# The 138<sup>th</sup> *Berry Show*

PROGRAM  
& SCHEDULE 2026

A photograph of two young men running in a race on a grassy field. The man on the left is wearing a green t-shirt and blue jeans, while the man on the right is wearing a black polo shirt with "RINGERS WESTERN" on the sleeve and dark shorts. In the background, there are spectators, a blue trash bin, and a building with a sign that partially reads "Ray Wh".

## COMPETITIONS

MAJOR SPONSOR

McGoldrick

ESTATE AGENTS

FRIDAY 30 & SATURDAY 31 JANUARY 2026  
"The Greatest Show in Town"





# Berry Show

## WHAT'S ON

### Friday & Saturday Program

Events, demos and competitions across both days of the Show...



FRIDAY DAYTIME  
30<sup>TH</sup> JANUARY 2026

### SHOWJUMPING

FROM 7.30AM

### AND HORSE CLASSES

FROM 9AM (RING 2,3 AND 4) 10AM (RING 1)

HORSE SCHEDULE SEE PAGES 30-42  
SHOWJUMPING SCHEDULE SEE PAGE 44



### DAIRY CATTLE JUDGING

FROM 8.30am

ON THE CATTLE LAWN  
(SEE MAP PAGE 90)

DAIRY CATTLE SCHEDULE SEE PAGES 48-52



### FROM 9am-7pm PAVILION

SEE ARTS AND CRAFTS, VEGETABLES, JAMS AND PRESERVES, FLOWERS, PAINTING, PHOTOGRAPHY AND MORE  
PAVILION SCHEDULE SEE PAGES 66-86



### FROM 10am POULTRY

RARE BREEDS AND KIDS ACTIVITIES IN THE BERRY GETAWAYS POULTRY PAVILION

POULTRY SCHEDULE  
SEE PAGES 62-64



IN THE WOODCHOP ARENA  
REGISTER FROM 3.30pm

### ANTHONY BENNETT MEMORIAL CHILDREN'S PET SHOW

PET SHOW SCHEDULE  
SEE PAGE 87



### AND FROM 5pm WOODCHOPPING

UPDATED SCHEDULE FOR 2026!

WOODCHOP SCHEDULE  
SEE PAGES 46-47

## MC GOLDRICK MAIN ARENA FRIDAY AFTERNOON AND EVENING ENTERTAINMENT

FRIDAY ENTERTAINMENT STARTS FROM AROUND 5.30PM  
SEE BELOW FOR THE GUIDE ORDER...

### HORSE SPORTING EVENTS

HORSE EVENTS START AT 7.30AM AND FINISH AT 5.30PM

**GUY MCLEAN** FIRST TIME TO SEE THIS SHOW TONIGHT!  
HORSEMANSHIP DISPLAY - BACK FOR 2026

**MAD-STYLE-MOTO**  
INSANE MOTOBIKE TRICKS - BACK FOR 2026

**BERRY BUCK OFF**  
JOIN IN THE FUN - TURN TO PAGE 88 FOR ENTRY INFO

**GUY MCLEAN** SECOND CHANCE TO SEE THE SHOW TONIGHT!  
HORSEMANSHIP DISPLAY - BACK FOR 2026

**BERRY BUCK OFF - FINALS**  
JOIN IN THE FUN - TURN TO PAGE 88 FOR DETAILS



### RODEO

2 HRS OF ACTION - A DISPLAY OF BALANCE, BRAVERY AND SPLIT-SECOND TIMING, FOR ENTRY INFO - TURN TO PAGE 60



## DEMOS AND ATTRACTIONS FROM 10am Both Days

GUY MCLEAN WORKSHOPS

ANIMAL NURSERY AND REPTILE ENCOUNTERS  
TRADE EXHIBITS AND FOOD TRUCKS  
DEMONSTRATIONS - COW MILKING,

HAWKESBURY WORKING SHEEP DOGS,  
SHOALHAVEN BEE KEEPERS ASSOCIATION

FOOD AND REFRESHMENTS  
SHOW BAGS AND  
SIDESHOW ALLEY

**FIRST AID STATION**  
RINGSIDE  
OPPOSITE  
THE PAVILION

SEE SIGNAGE AT SHOWGROUND  
FOR TIMES OF DEMOS



## MC GOLDRICK MAIN ARENA SATURDAY AFTERNOON AND EVENING ENTERTAINMENT

SATURDAY ENTERTAINMENT STARTS FROM AROUND 3.30PM  
SEE BELOW FOR THE GUIDE ORDER...

**GUY MCLEAN** FIRST CHANCE TO SEE THE SHOW TONIGHT!  
HORSEMANSHIP DISPLAY - BACK FOR 2026

**YOUNG FARMER CHALLENGE**  
JOIN IN THE FUN - TURN TO PAGE 88 FOR ENTRY INFO

**BEAUT UTE COMPETITION**  
JOIN IN THE FUN - TURN TO PAGE 88 FOR ENTRY INFO

**HAYMAKING DEMO**  
WATCH AS GRASS IS TURNED INTO HAY

**MAD-STYLE-MOTO** FIRST CHANCE TO SEE THE SHOW TONIGHT!  
INSANE MOTOBIKE TRICKS - BACK FOR 2026

**GUY MCLEAN** SECOND CHANCE TO SEE THE SHOW TONIGHT!  
HORSEMANSHIP DISPLAY - BACK FOR 2026

**DOG HIGH JUMP**  
JOIN IN THE FUN - TURN TO PAGE 88 FOR DETAILS

**BERRY SHOW YOUNG WOMAN**  
WATCH AS THE BERRY SHOW YOUNG WOMAN IS ANNOUNCED

**HAYSTACKING COMPETITION**  
JOIN IN THE FUN - TURN TO PAGE 88 FOR ENTRY INFO

**MAD-STYLE-MOTO** SECOND CHANCE TO SEE THE SHOW TONIGHT!  
INSANE MOTOBIKE TRICKS - BACK FOR 2026

**GUY MCLEAN** LAST CHANCE TO SEE THE SHOW TONIGHT!  
HORSEMANSHIP DISPLAY - BACK FOR 2026

## FIREWORKS



## SATURDAY DAYTIME 31<sup>ST</sup> JANUARY 2026

## SHOWJUMPING FROM 7.30AM AND HORSE CLASSES FROM 8.30AM (ALL RINGS)



HORSES SCHEDULE  
SEE PAGES 30-42

SHOWJUMPING SCHEDULE  
SEE PAGE 44

## BEEF CATTLE JUDGING

FROM 8.30am

ON THE CATTLE LAWN  
(SEE MAP PAGE 90)

BEEF CATTLE  
SCHEDULE SEE PAGES 53-55

## FROM 9am-7pm PAVILION

SEE ARTS AND CRAFTS, VEGETABLES, JAMS AND PRESERVES, FLOWERS, PAINTING, PHOTOGRAPHY AND MORE

PAVILION SCHEDULE SEE PAGES 66-86

## 8.30-4pm POULTRY

JUDGING FROM 8.30AM  
AND KIDS ACTIVITIES

POULTRY SCHEDULE SEE PAGES 62-64



JUDGING FROM 9AM

## ANGORA GOATS

GOAT SCHEDULE  
SEE PAGES 56-58



## FROM 9.30am WOODCHOPPING

UPDATED SCHEDULE FOR 2026!

WOODCHOP SCHEDULE  
SEE PAGES 46-47



# Berry Show COMPETITIONS

The Berry Show showcases a diverse array of competitions that celebrate the unique skills and talents of our rural community.

Pre-enter online - see p.88 or scan QR code.

ANYONE CAN  
ENTER!  
SCAN QR CODE  
TO ENTER



## BEAUT UTES

Polished showpieces to hard-working rigs, the Beaut Ute Competition puts country character on full display. In 2026, watch the Showground come alive with colour, noise and unabashed Aussie spirit as the utes take centre stage.

SPONSORED BY:  
T.J.FAHL CONTRACTING



## YOUNG FARMER CHALLENGE

Mixed teams of four face off in timed agricultural challenges. Strength, skill and teamwork is put to the test. The competition is fast, gritty and great fun to watch.

SPONSORED BY:  
SHOREBREAK FINANCE



## HAY STACKING COMPETITION

Teams of three race the clock to hand-stack 17 hay bales (13 for juniors), carrying one at a time with no throwing allowed. The tallest, straightest stack wins - and it's tougher than it looks!

SPONSORED BY:  
SHOREBREAK FINANCE



## DOG HIGH JUMP

Always a show favourite, this event has dogs hurling themselves at an ever-rising wall, spurred on by cheers from the audience. Plenty clear two metres - the best can even top three. Does your dog have what it takes?

SPONSORED BY:  
BLACK CAT GAS



COMPETITION ENTRY IS OPEN TO EVERYONE. PRE-ENTER COMPETITIONS BY SCANNING QR CODE ABOVE OR TURN TO COMPETITIONS - SECTION 32 (PAGES 88-89 OF THE SCHEDULE) FOR A FULL LIST OF CLASSES, MORE INFORMATION INCLUDING RULES AND PRIZE MONEY AND A SPONSOR LIST. FOR RODEO SCHEDULE TURN TO RODEO - SECTION 7: PAGE 60.

SPONSORED BY:  
SHOREBREAK FINANCE & ARP SURVEYORS



## BERRY BUCK OFF

The Berry Show's mechanical bull ride brings light-hearted excitement to the Showground, with heats on Friday evening and final rounds before the Rodeo.

Seasoned cowboys and fun-seekers alike can compete for the Champion prize, making the Berry Buck Off a memorable challenge for all who dare.



Shorebreak  
Finance



## ABOUT US

At Shorebreak Finance, we understand that investing in property can feel overwhelming, whether you're a first-time buyer or a seasoned investor. We're here to support you every step of the way, making the lending process smooth and stress-free.

Our diverse team has extensive experience in banking, finance and property development and investing and are passionate about helping others build wealth through property.

Reach out for a casual chat over coffee to discuss your property goals and plan for success.

## OUR SERVICES

Utilising us as your mortgage broker can save you valuable time and money, as well as grow your wealth through strategic planning and advice. Our services include:

- Doing the legwork for you by finding the best fit product for your unique scenario with access to over 40 lenders.
- Specialised advice for unique scenarios such as self-employment, first home buyers, or SMSFs.
- Handling the majority of the paperwork involved in securing a loan and navigating the process, ensuring you meet all requirements and deadlines.

0476 543 778

shorebreakfinance.com.au

hello@shorebreakfinance.com.au



# Berry Show COMPETITIONS

Sydney Royal AgShows  
NSW Young Woman  
COMPETITION



Main Sponsors

BERRY PHARMACY,  
THE BERRY BARN  
& NOWRA MAZDA

Each year, the AgShows NSW Young Woman Competition seeks to find an ambassador for rural New South Wales and the agricultural show movement. Open to women aged 18–26 who reside in NSW, the competition celebrates community involvement, leadership, and a passion for agriculture.

## Berry Show Young Woman COMPETITION

Our local Berry competition is the first step on that journey. The winner of Berry Show Young Woman goes on to compete at Zone level, with the chance to represent our region as a State Finalist at the Sydney Royal.

### WHAT'S IN IT FOR ENTRANTS?

- Become an ambassador for the Berry Show & community
- Take part in a much-loved community event
- Attend a personal development day
- Build new skills and confidence

### WHAT'S IN IT FOR THE BERRY SHOW SOCIETY?

The competition helps introduce local young women to the wider community, providing opportunities to volunteer and contribute within the region.

### CONGRATULATIONS TO BONNIE COX THE 2025 WINNER OF THE BERRY SHOW YOUNG WOMAN COMPETITION

After being named Berry Show Young Woman in 2025, Bonnie went on to win at Zone and represent Berry as a State Finalist at the Sydney Royal. Competing against fourteen other finalists from across NSW was a remarkable achievement - a testament to her dedication and commitment to agriculture and community. Bonnie was sponsored by Berry Rural Store.

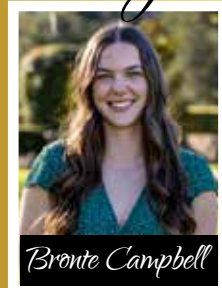


ABOVE: BONNIE COX WINNER OF THE 2025 BERRY SHOW YOUNG WOMAN AWARD. SPONSORED BY THE BERRY RURAL STORE

BELOW: THE 2025 PARTICIPANTS



## Berry Show Young Woman Competition 2026



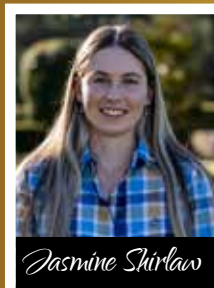
Bronte Campbell

SPONSORED BY  
BERRY  
PHYSIOTHERAPY



Matilda Forsyth

SPONSORED BY  
BROUGHTON  
RIDGE DAIRY



Jasmine Skirlaw

SPONSORED BY  
REGAL LODGE  
STABLES

Join us at 7pm on Saturday 31<sup>st</sup> January in the McGoldrick Main Arena to see who will be crowned as the 2026 Berry Show Young Woman.

The winner will represent Berry at the Zone competition which will be hosted by Albion Park Show Society. One or two women will be chosen to progress to the Royal Easter Show to compete for the State title.

### FOR MORE INFORMATION:

IF YOU WOULD LIKE MORE INFORMATION ABOUT ENTERING FOR 2027 PLEASE CALL JANET ON 0407 933 871



# The Berry Pharmacy

more than medicine

Follow us on Facebook for more information!

☎ 02 44 64 1091 📠 02 44 64 3105 ✉ info@berrypharmacy.com.au  
🌐 www.berrypharmacy.com.au 📍 106 Queen Street, Berry, NSW 2535

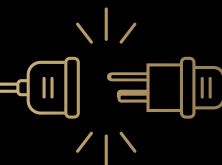
  
**GLOWIRE**  
BOUTIQUE ELECTRICAL

FOR ALL YOUR  
ELECTRICAL NEEDS

CONTACT LUKE ON  
t: 0412 522 675

or

e: glowireberry@gmail.com



**GHR CIVIL**  
Excavators • Grader • Rollers • Bulldozer



LOOKING FOR QUALITY EXCAVATION  
SERVICES IN THE SHOALHAVEN?

GHR Civil is a highly qualified excavating and earthmoving contractor ready to take on your job.

CONTACT GEOFF RUMBLE

hilarygeoff@bigpond.com

www.ghrcivil.com.au

Mobile: 0413 301 503



# Berry Show COMPETITIONS

## ANTHONY BENNETT MEMORIAL CHILDREN'S PET SHOW

REGISTER  
FROM 3.30PM  
AT WOODCHOP  
ARENA

Proudly Sponsored by  
the **Berry Vet Clinic**, the  
Friday afternoon pet show is  
always a favourite with the local  
children who dress themselves  
and their pets to impress.

At only \$2 entry fee per child (with no  
limit on the number of pets entered by  
each child) this is a great way for the children  
and their pets to get involved with the Show.

All well-behaved animals are accepted (no snakes).

The pet show starts at 4pm, please register at the  
Woodchop Arena from 3.30pm.

Turn to p.87 for a full list of the classes you can enter.



THANKS TO BERRY VET CLINIC FOR SPONSORING THIS EVENT

### Dr. Anthony Bennett

The Berry Show has named the event after Dr. Anthony Bennett, a well-regarded veterinarian and friend to the town of Berry, its people and its animals. His intelligence, quick wit and radiant smile were matched by his sincerity and compassion for his patients and their owners.

He volunteered passionately for the Berry Show, first as a veterinarian, then as MC, Honorary Committee Member and as a sponsor.

Anthony passed away in 2022.



AN INTEGRAL PART OF THE COMMUNITY

"Cultivating meaningful connection with  
people so that, together, we can provide  
the best care for animals."

Our commitment is to provide you with excellent  
service, maintain clear communication, and present  
you with options for treatment tailored to your  
individual needs.

(02) 4464 1899 | 84 QUEEN ST, BERRY, NSW  
WWW.BERRYVET.COM.AU



# Curran

PLUMBING • ELECTRICAL • HEATING & AIR®

Your local Berry plumber,  
electrician and heating  
& cooling specialists

Proud supporters of the Berry Show



Licence Number: 166184c • ABN: 30003960352

1300 816 844  
www.callcurran.com.au

Established  
Since 1991





THE ANTHONY BENNETT MEMORIAL CHILDREN’S PET SHOW - SECTION 31

**STEWARD:** Rachael Honeysett

**Entries are taken from** 3.30pm to 4.00pm, Friday, 30<sup>th</sup> January, 2026

**Judging to commence** at 4.00pm, Friday, 30<sup>th</sup> January, 2026

**ALL EXHIBITORS & SUPPORTERS MUST PAY GATE ENTRY**

**Entry Fee:** \$2 per child, which covers all entries in Pet Show (no limit to entries).

All children will receive a ribbon if possible,

**sponsored by BERRY VET CLINIC**

ALL ANIMALS MUST BE KEPT UNDER CONTROL.

WOODCHOP ARENA Ring 1 - MIXED PETS

Class 3201	Pet duck or fowl	Class 3212	Best kept guinea pig
Class 3202	Prettiest budgie	Class 3213	Rabbit with the most colours
Class 3203	Best kept parrot	Class 3214	Best kept rabbit
Class 3204	Most colourful bird	Class 3215	Pet lizard
Class 3205	Best kept kitten	Class 3216	Insects
Class 3206	Kitten with most colours	Class 3217	Any other pet (NO SNAKES)
Class 3207	Best kept cat	Class 3218	Pet most like its owner - Classes 3201 to 3217
Class 3208	Cat with the most colours		
Class 3209	Pet mouse		
Class 3210	Best mouse house		
Class 3211	Guinea pig with the most colours		

WOODCHOP ARENA Ring 2 - PUPPIES MUST BE UNDER 6 MONTHS

Class 3219	Best kept puppy	Class 3225	Puppy that looks most like its owner - Classes 3219 to 3224
Class 3220	Most cuddly puppy		
Class 3221	Puppy with the most colours		
Class 3222	Puppy with biggest feet		
Class 3223	Puppy with waggiest tail		
Class 3224	Cutest puppy		

WOODCHOP ARENA Ring 2 - DOGS MUST BE OVER 6 MONTHS

Class 3226	Best kept dog	Class 3234	Dog with the floppiest ears
Class 3227	Dog with the waggiest tail	Class 3235	Dog with the most colours
Class 3228	Dog with longest tail	Class 3236	Dog that looks most like its owner - Classes 3226 to 3235
Class 3229	Dog with shortest tail		
Class 3230	Happiest dog		
Class 3231	Shaggiest dog		
Class 3232	Smallest dog		
Class 3233	Largest dog		



COMPETITIONS - SECTION 32

		WHEN	WHERE	HOW TO REGISTER	FEE
FRIDAY	Pet Show (p.87)	FRIDAY from 4pm	Woodchop Arena	3.30-4pm at Woodchop Arena.	\$2.00 per child (NO ENTRY LIMIT)
	Berry Buck Off	HEATS: FRI from 6pm FINALS: FRI from 7pm	McGoldrick Main Arena	LIMITED SPACE - pre-enter (use QR code) by Wed 28 <sup>th</sup> Jan). ENTER AT THE SHOW: Enquire at Announcer's box. All competitors present to Announcers box by 5pm at latest.	NEW FOR 2026 NO ENTRY FEE!
	Rodeo (p.60)	FRIDAY from 7.30pm	McGoldrick Main Arena	Via ABCRA only (abcra.com.au)	See ABCRA
SATURDAY	Beaut Utes	SATURDAY Approx. 3.40pm	Parade of Utes in McGoldrick Main Arena	Contact Alex on 0449 668 439 for more information	\$10 for car & driver; Passengers \$10 each
	Young Farmer Challenge	SATURDAY Approx. 3.50pm	McGoldrick Main Arena	LIMITED SPACE - pre-enter (use QR code) by Wed 28 <sup>th</sup> Jan). ENTER AT THE SHOW: Enquire at Announcer's box. All competitors present to Announcers box by 2.50pm at latest.	NEW FOR 2026 NO ENTRY FEE!
	Dog High Jump	SATURDAY Approx. 6.30-7pm	McGoldrick Main Arena	LIMITED SPACE - pre-enter (use QR code) by Wed 28 <sup>th</sup> Jan). ENTER AT THE SHOW: Enquire at Announcer's box. All competitors present to Announcers box by 5.30pm at latest.	NEW FOR 2026 NO ENTRY FEE!
	Young Woman Competition	SATURDAY Approx. 7pm	McGoldrick Main Arena	Registrations for 2027 Show see p.24 for details.	N/A
	Hay Stacking Competition	SATURDAY Approx. 7.30pm	McGoldrick Main Arena	LIMITED SPACE - pre-enter (use QR code) by Wed 28 <sup>th</sup> Jan). ENTER AT THE SHOW: Enquire at Announcer's box. All competitors present to Announcers box by 6.30pm at latest.	NEW FOR 2026 NO ENTRY FEE!

ALL EXHIBITORS & SUPPORTERS MUST PAY GATE ENTRY



PRE-ENTER COMPETITIONS

To pre-enter scan the QR Code.

Please note, pre-enter to avoid disappointment. Pre-entry closes at 5pm Wednesday 28<sup>th</sup> January. Late entries will be taken during the show at the Announcer's Box if there are spaces left. Don't want to use the QR code? Go to [berryshow.org.au](http://berryshow.org.au) > Berry Show 2026 > Competitions.

BERRY BUCK OFF: MECHANICAL BULL RIDE COMPETITION

Class 32010

SPONSORED BY: SHOREBREAK FINANCE & ARP SURVEYORS

**CHIEF STEWARD:** Stuart Yeatman

**STEWARDS:** Will Miller & Josh Francis

**REGISTRATION:**

**Pre-enter through Showday - see QR code (above).**

Pre-entry closes at 5pm Wednesday 28<sup>th</sup> January.

Late entries will be taken during the show at the Announcer's Box if there are spaces left.

**All competitors should present to the Announcer's Box by 5pm Friday**

Maximum 30 competitors in this class.

Competitors must be 18 years-of-age and over to compete in this class; proof of age is required on the day of competition.

**PRIZE:** 1<sup>st</sup> \$100 + ribbon, 2<sup>nd</sup> \$50 + ribbon.

BEAUT UTE COMPETITION

SPONSORED BY: T.J.FAHL CONTRACTING

**CHIEF STEWARD:** Alex Hirst     **STEWARD:** Terry Fahl

**Enquiries:** For enquires about location & times contact Alex: 0449 668 439

**REGISTRATION:**

**Entry Fee:** \$10 for car and driver. Passengers \$10 each. NO passengers on the tray of the utes.

**Prizes:** 1<sup>st</sup>, \$75 + ribbon, 2<sup>nd</sup>, \$50, 3<sup>rd</sup>, \$25

**Judging:** Saturday, 31<sup>st</sup> January, 2026.

Class 32002 **CHICK'S UTE** - 1<sup>st</sup> \$75, 2<sup>nd</sup> \$50, 3<sup>rd</sup> \$25  
Class 32003 **COUNTRY UTE** - 1<sup>st</sup> \$75, 2<sup>nd</sup> \$50, 3<sup>rd</sup> \$25  
Class 32004 **TOWN UTE** - 1<sup>st</sup> \$75, 2<sup>nd</sup> \$50, 3<sup>rd</sup> \$25  
Class 32005 **OFF-ROAD UTE** - 1<sup>st</sup> \$75, 2<sup>nd</sup> \$50, 3<sup>rd</sup> \$25

**CHAMPION UTE**  
**Best overall ute - BARRY FOREMAN MEMORIAL - \$100, sponsored by T.J. FAHL RURAL CONTRACTING**  
**PEOPLE'S CHOICE AWARD** - ribbon - judging at Goat Shed from 2pm, Saturday afternoon.



**YOUNG FARMER CHALLENGE** Class 32006**SPONSORED BY:** SHOREBREAK FINANCE**CHIEF STEWARD:** Liz Yeatman**STEWARDS:** Ruby Stephens**REGISTRATION:****Pre-enter through Showday - see QR code (p.88).**

There are limited spaces so please pre-enter your team to guarantee your space. Pre-entry closes at 5pm Wednesday 28<sup>th</sup> January - if space available late entries will be accepted at the Announcer's box on Saturday. **All competitors must present to the Announcer's Box by 2.50pm on Sat.**

**Prizes:** 1<sup>st</sup> Place in Final - \$400 + ribbon, 2<sup>nd</sup> Place in Final \$200 + ribbon, 3<sup>rd</sup> ribbon.

**AIM:**

For the team to complete a series of practical field challenges with the fastest time and with the correct technique and safe work practice. 6 teams 4 people per team.

**RULES:**

- This Competition is open to teams of four people. **Teams must contain at least one male and one female.** Competitors will be required to register as a team. One competitor must be nominated as team captain and submit their telephone number and email address.
- Competitors must be aged between 18 and 35 years of age on the day of the Competition. Competitors may be required to provide proof of age.
- One member of each team is required to meet each of the following criteria:
  - Hold a current driver's licence
  - Be capable of hitching a trailer to a car and backing the trailer
  - Have experience driving an ATV
  - Be competent at handling livestock
- Teams will be required to take part in heats on Saturday afternoon and if successful, the Grand Final immediately following in the Main Arena.
- Heats will be timed.
- The fastest teams that have successfully completed the required heat challenges may progress to Grand Final.
- The winners of the Berry Show Young Farmer Challenge will also have the opportunity to compete for the title of NSW State Champions at the NSW Young Farmer Challenge Finals held at the Sydney Royal Easter Show in April 2026!

**DOG HIGH JUMP** Class 32009**SPONSORED BY:** BLACK CAT GAS**CHIEF STEWARD:** Ed Hogan **STEWARDS:** Will Miller & Caroline Miller**REGISTRATION:****Pre-enter through Showday - see QR code (p.88).**

Pre-entry closes at 5pm Wednesday 28<sup>th</sup> January. Late entries will be taken during the show at the Announcer's Box if there are spaces left.

**All competitors must present to the Announcer's Box by 5pm Saturday**

**HAY STACKING COMPETITION****SPONSORED BY:** SHOREBREAK FINANCE**CHIEF STEWARD:** Stuart Yeatman**STEWARDS:** Will Miller, Josh Francis & Natalie Sparks**REGISTRATION:****Pre-enter through Showday - see QR code (p.88).**

Pre-entry closes at 5pm Wednesday 28<sup>th</sup> January. Late entries will be taken during the show at the Announcer's Box if there are spaces left.

**All competitors must present to the Announcer's Box before 6.30pm Saturday**

**Class 32007 JUNIOR HAY STACKING COMPETITION**

Each team member must be 10 years of age and under 15 years of age.

**Prizes:** 1<sup>st</sup> \$150 + ribbon, 2<sup>nd</sup> \$75 + ribbon

**Class 32008 OPEN HAY STACKING COMPETITION**

Each team member must be 15 years of age and over. Commencement follows Juniors.

**Prizes:** 1<sup>st</sup> \$300 + ribbon, 2<sup>nd</sup> \$150 + ribbon

**RULES:**

Teams will consist of three (3) members. Participation waivers must be signed by all competitors prior to entry to the ring (available at Announcers' Box).

The object of the event is to stack 17 bales of hay (OPEN) or 13 bales (JUNIOR) in the quickest time, the stack must be constructed as per the Construction Rules. Only 1 bale can be carried at one time using the strings – NO throwing. Correct lifting techniques should be used in manual handling.

The layout - 3 parallel lines marked 10m apart. Line 1 the start, line 2 is the construction line and line 3 the hay bale retrieval area.

Construction rules - Stacks must have 4 bales on the base, 3 bales on the second layer, 2 bales on each of the next five layers for seniors (three layers for juniors). Competitors stand behind line 1 until given directions to start. Competitors retrieve the bales from the retrieval area behind line 3 and construct their haystack ON THE CENTRAL LINE (Line 2).

Teams will be timed from start to finish. The finish is declared when the team forms a stack as set out above in the Construction Rules (above) and ALL team members return to the start line, (Line 1).

Participants MUST NOT STAND ON TOP OF FINISHED STACK. Stacks must be dismantled and carried 1 bale at a time back to the starting point.

Heats of 2 to 3 teams will be run with the fastest time overall winning.



# Berry Show

## MERCHANDISE



**various sizes & colours** - black, navy, hot pink, white  
All adult & children's sizes - From \$25.00



### MERCHANDISE AVAILABLE AT THE SHOW

You'll find the merchandise for sale at the following Show Locations:  
Axemens Bar, Show BBQ, cafe, kiosk, show office, sponsors area/members bar  
All locations marked with a pink dot on the map on page 90.

### OR BUY ONLINE AT BERRYSHOW.COM.AU

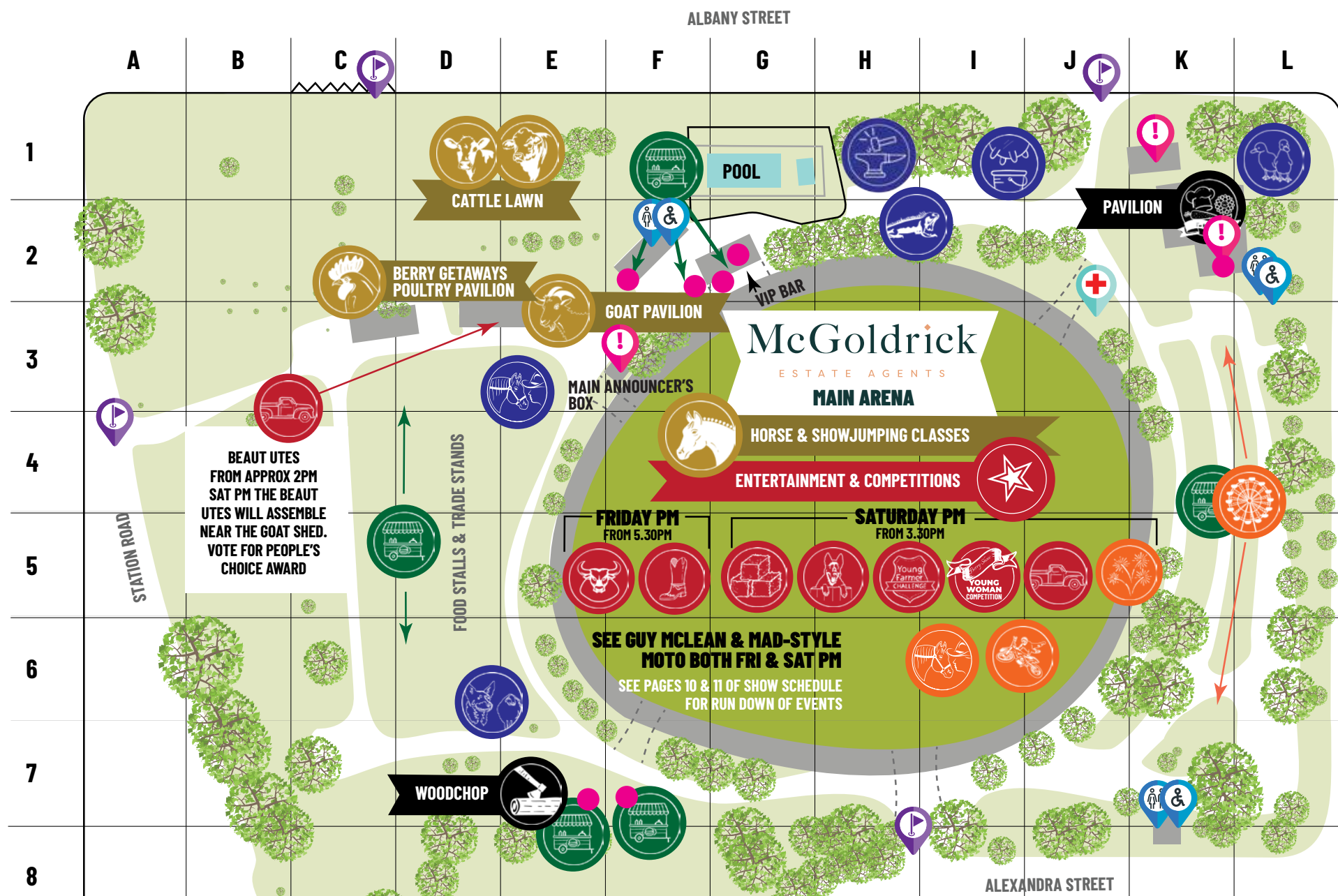
Pick up your purchases from the Show Office during opening hours before, during or after the Show. Turn to page 6 for opening hours.

LOOK OUT FOR NEW PRODUCTS

We have some brand new products in the pipeline for 2026 - check out the Merchandise Stands at the show...







K2 SHOW OFFICE  
 K1 RURAL YOUTH HALL  
 F3 MAIN ANNOUNCER'S BOX  
 J3 FIRST AID

**ENTRY GATES**

**H8 MAIN ENTRANCE - PUBLIC ACCESS**  
PRE-PURCHASED TICKETS, CARD & CASH PAYMENTS

**A4 HORSE GATE - PUBLIC ACCESS**  
PRE-PURCHASED TICKETS + CARD & CASH PAYMENTS  
**ACCESS FOR HORSES, GOATS, POULTRY, TRADE & FOOD STALL**

**C1 CATTLE GATE - PUBLIC ACCESS**  
PRE-PURCHASED TICKETS, CARD & CASH PAYMENTS  
**NO ACCESS FOR HORSES, GOATS, POULTRY, TRADE & FOOD STALL**

**J1 RAY ISON GATE - PUBLIC ACCESS**  
PRE-PURCHASED TICKETS, CARD & CASH PAYMENTS

**LIVESTOCK**

**F3-J6 HORSES & SHOWJUMPING** **MCGOLDRICK MAIN ARENA**  
FROM 7.30AM BOTH FRI & SAT

**C3 BERRY GETAWAYS POULTRY PAVILION**   
FROM 10AM FRI & FROM 8.30AM ON SAT

**D2-E2 CATTLE LAWN**   
DAIRY FROM 8.30AM FRI  
BEEF FROM 8.30AM SAT

**E3 GOAT SHED**   
FROM 9AM SAT

**OTHER MAIN EVENTS**

**K2 PAVILION**

**E7 WOODCHOP**

**McGoldrick**  
ESTATE AGENTS

**ENTERTAINMENT IN THE MAIN ARENA**

**F3-J6 THE MCGOLDRICK MAIN ARENA**

**FRI PM ENTERTAINMENT - from 5.30pm**  
**GUY MCLEAN HORSEMANSHIP DISPLAY** TWO SHOWS  
**MAD-STYLE MOTO**  
**BERRY BUCK-OFF** HEATS AND FINALS  
**RODEO**

**SAT PM ENTERTAINMENT - from 3.30pm**  
**GUY MCLEAN HORSEMANSHIP DISPLAY** THREE SHOWS  
**YOUNG FARMER CHALLENGE**  
**BEAUT UTE COMPETITION** - ALSO IN GOAT SHED FROM APPROX 2PM  
**HAYMAKING DEMONSTRATION**  
**MAD-STYLE MOTO** TWO SHOWS  
**DOG HIGH JUMP**  
**BERRY SHOW YOUNG WOMAN COMPETITION**  
**FIREWORKS!**

*Berry Show*  
**MERCHANDISE**

**YOU CAN BUY BERRY SHOW MERCHANDISE AT THE LOCATIONS MARKED ON THE MAP WITH A PINK DOT.**  
TSHIRTS, CAPS, STUBBY HOLDERS, PLUSH TOYS...

**FOOD & DRINK**

**F2 KIOSK** PIES, CAKES, DRINKS, TEA & COFFEE, SAUSAGE SIZZLE, STEAK SANDWICHES...

**F2 MEMBERS BAR NEW FOR 2026**  
TO THE SOUTH OF THE GRANDSTAND - MEMBERS ONLY BAR - RINGSIDE POSITION. OVER 18.

**G2 GRANDSTAND CAFÉ**  
UNDER GRANDSTAND SANDWICHES, DEVONSHIRE TEAS, HOT FOOD, DRINKS, TEA & BARISTA COFFEE.

**G2 VIP BAR** BAR RESERVED FOR VIPS. ONLY PEOPLE WITH VIP WRISTBANDS WILL BE ADMITTED.

**K4-K5 SIDESHOW ALLEY**

**F7 BBQ** SAUSAGE SIZZLE, BACON & EGG ROLLS, ETC...

**F8 AXEMAN & SAWYER'S BAR** POPULAR BAR WITH FAMILY FRIENDLY BEER GARDEN

**D5 FOOD STALLS** - SOMETHING FOR EVERYONE

**DEMOS OUTSIDE MAIN ARENA**

**L1 ANIMAL NURSERY**

**D6 HAWKESBURY WORKING SHEEPDOGS**

**E3 GUY MCLEAN HORSEMANSHIP YARD**

**H1 BLACKSMITH DEMONSTRATIONS**

**I1 COW MILKING DEMONSTRATIONS**

**H2 REPTILE SHOW**

CHECK SIGNAGE AT SHOWGROUND FOR TIMES OF DEMONSTRATIONS

**PUBLIC TOILETS**

**F2 (NEAR KIOSK)**

**L2, L3**   
(NEAR SHOW OFFICE)

**K8**   
(NEAR MAIN ENTRANCE)





# Bond Lifestyle

PROPERTIES



[WWW.BONDLIFESTYLEPROPERTIES.COM](http://WWW.BONDLIFESTYLEPROPERTIES.COM)



[@BONDLIFESTYLEPROPERTIES](https://www.instagram.com/BONDLIFESTYLEPROPERTIES)