

# The 138<sup>th</sup> *Berry Show*

PROGRAM  
& SCHEDULE 2026



# WOODCHOP

MAJOR SPONSOR

## McGoldrick

ESTATE AGENTS

**FRIDAY 30 & SATURDAY 31 JANUARY 2026**  
**"The Greatest Show in Town"**





# Berry Show

## WHAT'S ON

### Friday & Saturday Program

Events, demos and competitions across both days of the Show...



FRIDAY DAYTIME  
30<sup>TH</sup> JANUARY 2026

### SHOWJUMPING

FROM 7.30AM

### AND HORSE CLASSES

FROM 9AM (RING 2,3 AND 4) 10AM (RING 1)

HORSE SCHEDULE SEE PAGES 30-42  
SHOWJUMPING SCHEDULE SEE PAGE 44



### DAIRY CATTLE JUDGING

FROM 8.30am

ON THE CATTLE LAWN  
(SEE MAP PAGE 90)

DAIRY CATTLE SCHEDULE SEE PAGES 48-52



### FROM 9am-7pm PAVILION

SEE ARTS AND CRAFTS, VEGETABLES, JAMS AND PRESERVES, FLOWERS, PAINTING, PHOTOGRAPHY AND MORE  
PAVILION SCHEDULE SEE PAGES 66-86



### FROM 10am POULTRY

RARE BREEDS AND KIDS ACTIVITIES IN THE BERRY GETAWAYS POULTRY PAVILION

POULTRY SCHEDULE  
SEE PAGES 62-64



IN THE WOODCHOP ARENA  
REGISTER FROM 3.30pm

### ANTHONY BENNETT MEMORIAL CHILDREN'S PET SHOW

PET SHOW SCHEDULE  
SEE PAGE 87



### AND FROM 5pm WOODCHOPPING

UPDATED SCHEDULE FOR 2026!

WOODCHOP SCHEDULE  
SEE PAGES 46-47

## MC GOLDRICK MAIN ARENA FRIDAY AFTERNOON AND EVENING ENTERTAINMENT

FRIDAY ENTERTAINMENT STARTS FROM AROUND 5.30PM  
SEE BELOW FOR THE GUIDE ORDER...

### HORSE SPORTING EVENTS

HORSE EVENTS START AT 7.30AM AND FINISH AT 5.30PM

**GUY MCLEAN** FIRST TIME TO SEE THIS SHOW TONIGHT!  
HORSEMANSHIP DISPLAY - BACK FOR 2026

**MAD-STYLE-MOTO**  
INSANE MOTOBIKE TRICKS - BACK FOR 2026



**BERRY BUCK OFF**  
JOIN IN THE FUN - TURN TO PAGE 88 FOR ENTRY INFO

**GUY MCLEAN** SECOND CHANCE TO SEE THE SHOW TONIGHT!  
HORSEMANSHIP DISPLAY - BACK FOR 2026



**BERRY BUCK OFF - FINALS**  
JOIN IN THE FUN - TURN TO PAGE 88 FOR DETAILS



### RODEO

2 HRS OF ACTION - A DISPLAY OF BALANCE, BRAVERY AND SPLIT-SECOND TIMING,  
FOR ENTRY INFO - TURN TO PAGE 60



## DEMOS AND ATTRACTIONS FROM 10am Both Days

GUY MCLEAN WORKSHOPS

ANIMAL NURSERY AND REPTILE ENCOUNTERS  
TRADE EXHIBITS AND FOOD TRUCKS  
DEMONSTRATIONS - COW MILKING,

HAWKESBURY WORKING SHEEP DOGS,  
SHOALHAVEN BEE KEEPERS ASSOCIATION

FOOD AND REFRESHMENTS  
SHOW BAGS AND  
SIDESHOW ALLEY

**FIRST AID STATION**  
RINGSIDE  
OPPOSITE  
THE PAVILION

SEE SIGNAGE AT SHOWGROUND  
FOR TIMES OF DEMOS



## MC GOLDRICK MAIN ARENA SATURDAY AFTERNOON AND EVENING ENTERTAINMENT

SATURDAY ENTERTAINMENT STARTS FROM AROUND 3.30PM  
SEE BELOW FOR THE GUIDE ORDER...

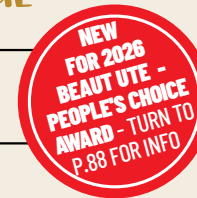
**GUY MCLEAN** FIRST CHANCE TO SEE THE SHOW TONIGHT!  
HORSEMANSHIP DISPLAY - BACK FOR 2026



**YOUNG FARMER CHALLENGE**  
JOIN IN THE FUN - TURN TO PAGE 88 FOR ENTRY INFO



**BEAUT UTE COMPETITION**  
JOIN IN THE FUN - TURN TO PAGE 88 FOR ENTRY INFO



**HAYMAKING DEMO**  
WATCH AS GRASS IS TURNED INTO HAY

**MAD-STYLE-MOTO** FIRST CHANCE TO SEE THE SHOW TONIGHT!  
INSANE MOTOBIKE TRICKS - BACK FOR 2026

**GUY MCLEAN** SECOND CHANCE TO SEE THE SHOW TONIGHT!  
HORSEMANSHIP DISPLAY - BACK FOR 2026



**DOG HIGH JUMP**  
JOIN IN THE FUN - TURN TO PAGE 88 FOR DETAILS

**BERRY SHOW YOUNG WOMAN**  
WATCH AS THE BERRY SHOW YOUNG WOMAN IS ANNOUNCED



**HAYSTACKING COMPETITION**  
JOIN IN THE FUN - TURN TO PAGE 88 FOR ENTRY INFO

**MAD-STYLE-MOTO** SECOND CHANCE TO SEE THE SHOW TONIGHT!  
INSANE MOTOBIKE TRICKS - BACK FOR 2026

**GUY MCLEAN** LAST CHANCE TO SEE THE SHOW TONIGHT!  
HORSEMANSHIP DISPLAY - BACK FOR 2026

## FIREWORKS



## SATURDAY DAYTIME 31<sup>ST</sup> JANUARY 2026

## SHOWJUMPING FROM 7.30AM AND HORSE CLASSES FROM 8.30AM (ALL RINGS)



HORSES SCHEDULE  
SEE PAGES 30-42

SHOWJUMPING SCHEDULE  
SEE PAGE 44

## BEEF CATTLE JUDGING

FROM 8.30am  
ON THE CATTLE LAWN  
(SEE MAP PAGE 90)

BEEF CATTLE  
SCHEDULE SEE PAGES 53-55

## FROM 9am-7pm PAVILION

SEE ARTS AND CRAFTS, VEGETABLES, JAMS AND PRESERVES, FLOWERS, PAINTING, PHOTOGRAPHY AND MORE

PAVILION SCHEDULE SEE PAGES 66-86

## 8.30-4pm POULTRY

JUDGING FROM 8.30AM  
AND KIDS ACTIVITIES

POULTRY SCHEDULE SEE PAGES 62-64



JUDGING FROM 9AM

## ANGORA GOATS

GOAT SCHEDULE  
SEE PAGES 56-58



## FROM 9.30am WOODCHOPPING

UPDATED SCHEDULE FOR 2026!

WOODCHOP SCHEDULE  
SEE PAGES 46-47



# Berry Show WOODCHOP

We're excited for the Woodchop event at the 2026 Berry Show! This traditional competition showcases incredible skill, strength, and precision from both men and women competitors, celebrating a craft rooted deeply in rural heritage. It's always a crowd favourite.

The feature Woodchop event is the Australian National Underhand Championship that has attracted world class Axemen in years past.

The Show will also host the NSW State Championship chop for women, attracting top female competitors from across the state.

These together with the sawing and tree felling events will make up a full Friday evening and Saturday program with world class competition.



FIND OUT MORE:

[heavyplanthireaustralia.com.au](http://heavyplanthireaustralia.com.au)

CONTACT US:

PH: 0402 141 435  
[david@hphaustralia.com](mailto:david@hphaustralia.com)

## WOODCHOP - SECTION 3

### BOND LIFESTYLE PROPERTIES WOODCHOP

**CHIEF STEWARD:** Mick Claydon  
**STEWARDS:** Rob McIntosh, Trish Claydon, Dick Harris, Jim Auld, Ray Wright, Chris Francis, Peter Windley, Alan Bowley and Allan Blanchie WA  
**HANDICAPPER:** Lindsay Parnell

Competitors compete at own risk. Competitors in the program must be 10 years old or over on the day. The Committee has the right to delete or change the program.

Nominations to the Woodchop Association Secretary, Mrs Julie Reumer, Mittagong - Phone 0408 480 150, Email [jreumer@bigpond.com](mailto:jreumer@bigpond.com) no later than 9<sup>th</sup> January, 2026.

### Woodchop Entry Fees

Sawing & Butchers Block classes - \$12,  
Championships - \$30,  
All other classes - \$25,  
Juniors free

### ALL EXHIBITORS & SUPPORTERS MUST PAY GATE ENTRY

Special thanks to **HEAVY PLANT HIRE AUSTRALIA** for keeping things moving.  
and **MAKER CONSULTING SERVICES** for sponsoring the trees for the Tree Felling Handicap

**PROUDLY SPONSORED BY:**  
BOND LIFESTYLE PROPERTIES,  
GREAT SOUTHERN HOTEL,  
THE HARRIS FAMILY,  
BERRY GETAWAYS,  
THE JACK PAYNE FAMILY,  
RAY WHITE BERRY,  
HOLLABACK PARK,  
BERRY VILLAGE BOUTIQUE MOTEL,  
LOUISE WALSH & DAVE JORDAN,  
THE DAVIS FAMILY  
JULIE & GEOFF ROSENBERG.  
C.K.B. CIVIL,  
BROUGHTON LANDSCAPES,  
LYN WHITE,  
MI ENGINEERS,  
BERRY MOBILE AUTOMOTIVE  
AXEMAN SINGLETs, sponsored by  
ORFORD RURAL CONTRACTING

### FRIDAY WOODCHOP - 5pm START

Class 30001	250mm Standing Block Handicap-1 <sup>st</sup> \$400, 2 <sup>nd</sup> \$150, 3 <sup>rd</sup> \$100, <b>sponsored by MI ENGINEERS &amp; BENCHMARK ESTIMATING SOFTWARE</b>	Class 30003	450mm Butcher's Block Handicap – FINAL 1 <sup>st</sup> \$400, 2 <sup>nd</sup> \$150, 3 <sup>rd</sup> \$100, <b>sponsored by BOND LIFESTYLE PROPERTIES</b>
Class 30002	275mm Underhand Handicap-1 <sup>st</sup> \$400, 2 <sup>nd</sup> \$150, 3 <sup>rd</sup> \$100, <b>sponsored by C.K.B. CIVIL</b>		

### SATURDAY WOODCHOP - 9.00am FOR 9.30am START

Class 40001	1 <sup>st</sup> Division - 300mm Underhand Handicap-1 <sup>st</sup> \$600, 2 <sup>nd</sup> \$250, 3 <sup>rd</sup> \$150, 4 <sup>th</sup> \$100, <b>sponsored by THE DAVIS FAMILY</b>		<b>+ LOUISE WALSH &amp; DAVE JORDAN</b>
Class 40002	2 <sup>nd</sup> Division - 275mm Underhand Handicap 1 <sup>st</sup> \$600, 2 <sup>nd</sup> \$250, 3 <sup>rd</sup> \$150, 4 <sup>th</sup> \$100, <b>sponsored by BERRY MOBILE AUTOMOTIVE + BROUGHTON LANDSCAPES</b>	Class 40009	Open 250mm Standing Block Handicap 1 <sup>st</sup> \$600, 2 <sup>nd</sup> \$150, 3 <sup>rd</sup> \$100, 4 <sup>th</sup> \$50, 5 <sup>th</sup> \$50, 6 <sup>th</sup> \$50, <b>sponsored by BOND LIFESTYLE PROPERTIES</b>
Class 40003	275mm Underhand Veterans-\$400 (Pool) - <b>BOB WHITE MEMORIAL, donated by LYN WHITE</b>	Class 40010	275mm Novice Underhand 1 <sup>st</sup> \$200, 2 <sup>nd</sup> \$100, 3 <sup>rd</sup> \$75, 4 <sup>th</sup> \$50, <b>sponsored by HEAVY PLANT HIRE AUSTRALIA</b>
Class 40004	1 <sup>st</sup> Division 300mm Standing Block Handicap 1 <sup>st</sup> \$600, 2 <sup>nd</sup> \$250, 3 <sup>rd</sup> \$150, 4 <sup>th</sup> \$100, <b>sponsored by McGOLDRICK ESTATE AGENTS</b>	Class 40011	Novice 250mm Standing Block 1 <sup>st</sup> \$200, 2 <sup>nd</sup> \$100, 3 <sup>rd</sup> \$75, 4 <sup>th</sup> \$50, <b>sponsored by HOLLABACK PARK</b>
Class 40005	2 <sup>nd</sup> Division 275mm Standing Block Handicap 1 <sup>st</sup> \$600, 2 <sup>nd</sup> \$250, 3 <sup>rd</sup> \$150, 4 <sup>th</sup> \$100, <b>sponsored by BOND LIFESTYLE PROPERTIES</b>	Class 40012	250mm Junior Chop Underhand 1 <sup>st</sup> \$60, 2 <sup>nd</sup> \$40, 3 <sup>rd</sup> \$30, 4 <sup>th</sup> \$20, 5 <sup>th</sup> \$10, 6 <sup>th</sup> \$10, 7 <sup>th</sup> \$10, 8 <sup>th</sup> \$10, 9 <sup>th</sup> \$10, 10 <sup>th</sup> \$10, <b>sponsored by BOND LIFESTYLE PROPERTIES</b>
Class 40006	300mm "AUSTRALIAN CHAMPIONSHIP" BROUGHTON UNDERHAND CHAMPIONSHIP - 1 <sup>st</sup> \$2500, 2 <sup>nd</sup> \$1500, 3 <sup>rd</sup> \$800, 4 <sup>th</sup> \$600, 5 <sup>th</sup> \$300, 6 <sup>th</sup> \$150, 7 <sup>th</sup> \$150, 8 <sup>th</sup> \$150, <b>sponsored by BOND LIFESTYLE PROPERTIES + BERRY GETAWAYS + GREAT SOUTHERN HOTEL</b>	Class 40013	450mm Double Handed Saw Handicap 1 <sup>st</sup> \$800, 2 <sup>nd</sup> \$400, 3 <sup>rd</sup> \$200, 4 <sup>th</sup> \$100 <b>JACK PAYNE MEMORIAL, sponsored by THE PAYNE FAMILY</b>
Class 40007	275mm Brogers Tree Felling Handicap-1 <sup>st</sup> \$500, 2 <sup>nd</sup> \$200, 3 <sup>rd</sup> \$150 4 <sup>th</sup> \$100, <b>sponsored by HOLLABACK PARK</b>	Class 40014	<b>JIM HARRIS MEMORIAL</b> N.S.W. Single Handed Saw Championship 1 <sup>st</sup> \$1200, 2 <sup>nd</sup> \$600, 3 <sup>rd</sup> \$200, 4 <sup>th</sup> \$100, 5 <sup>th</sup> \$100, 6 <sup>th</sup> \$100, 7 <sup>th</sup> \$100, 8 <sup>th</sup> \$100, <b>sponsored by THE HARRIS FAMILY + JULIE &amp; GEOFF ROSENBERG</b>
Class 40008	<b>FLORA MCLEAN NSW CHAMPIONSHIP LADIES UNDERHAND HANDICAP</b> 1 <sup>st</sup> \$1200, 2 <sup>nd</sup> \$600, 3 <sup>rd</sup> \$200, 4 <sup>th</sup> \$100, 5 <sup>th</sup> \$100, 6 <sup>th</sup> \$100, 7 <sup>th</sup> \$100, 8 <sup>th</sup> \$100, <b>sponsored by BOND LIFESTYLE PROPERTIES</b>	Class 40015	300mm Hard Hitting Championship 1 <sup>st</sup> \$250, 2 <sup>nd</sup> \$100, 3 <sup>rd</sup> \$75, 4 <sup>th</sup> \$50, <b>sponsored by RAY WHITE BERRY</b>
		Class 40016	Medley Relay-\$900 (Pool), <b>sponsored by RAY WHITE BERRY</b>





# BondLifestyle

PROPERTIES



[WWW.BONDLIFESTYLEPROPERTIES.COM](http://WWW.BONDLIFESTYLEPROPERTIES.COM)



[@BONDLIFESTYLEPROPERTIES](https://www.instagram.com/BONDLIFESTYLEPROPERTIES)